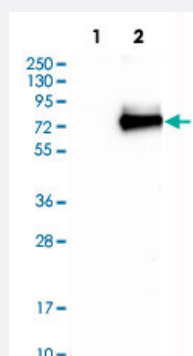


SIGLEC6 polyclonal antibody

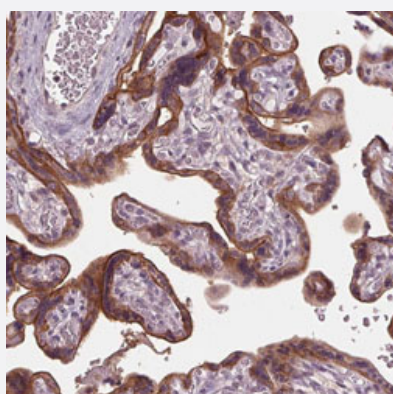
Catalog # PAB31412 Size 100 uL

Applications



Western Blot (Transfected lysate)

Western Blot analysis of Lane 1: negative control (vector only transfected HEK293T cell lysate) and Lane 2: over-expression lysate (co-expressed with a C-terminal myc-DDK tag in mammalian HEK293T cells) with SIGLEC6 polyclonal antibody (Cat # PAB31412).



Immunohistochemistry (Formalin/PFA-fixed paraffin-embedded sections)

Immunohistochemical staining (Formalin-fixed paraffin-embedded sections) of human placenta with SIGLEC6 polyclonal antibody (Cat # PAB31412) shows moderate cytoplasmic and membranous positivity in trophoblastic cells.

Specification

Product Description	Rabbit polyclonal antibody raised against partial recombinant human SIGLEC6.
Immunogen	Recombinant protein corresponding to human SIGLEC6.
Sequence	RVKTRRKAAQPVQNTDDVNPVMVSGSRGHQHQFQTGMVSDHPAEAGPISEDEQELHYAVLHFH KVQPQEPKVTDEYSEIKHK
Host	Rabbit
Reactivity	Human

Form	Liquid
Purification	Antigen affinity purification
Isotype	IgG
Recommend Usage	Immunohistochemistry (Formalin/PFA-fixed paraffin-embedded sections) (1:500-1:1000) Western Blot (1:100-1:250) The optimal working dilution should be determined by the end user.
Storage Buffer	In PBS, pH 7.2 (40% glycerol, 0.02% sodium azide).
Storage Instruction	Store at 4°C. For long term storage store at -20°C. Aliquot to avoid repeated freezing and thawing.
Note	This product contains sodium azide: a POISONOUS AND HAZARDOUS SUBSTANCE which should be handled by trained staff only.

Applications

- Western Blot (Transfected lysate)

Western Blot analysis of Lane 1: negative control (vector only transfected HEK293T cell lysate) and Lane 2: over-expression lysate (co-expressed with a C-terminal myc-DDK tag in mammalian HEK293T cells) with SIGLEC6 polyclonal antibody (Cat # PAB31412).

- Immunohistochemistry (Formalin/PFA-fixed paraffin-embedded sections)

Immunohistochemical staining (Formalin-fixed paraffin-embedded sections) of human placenta with SIGLEC6 polyclonal antibody (Cat # PAB31412) shows moderate cytoplasmic and membranous positivity in trophoblastic cells.

Gene Info — SIGLEC6

Entrez GeneID	946
Protein Accession#	O43699
Gene Name	SIGLEC6
Gene Alias	CD327, CD33L, CD33L1, CDw327, OBBP1, SIGLEC-6
Gene Description	sialic acid binding Ig-like lectin 6
Omim ID	604405
Gene Ontology	Hyperlink

Other Designations

CD33 antigen-like 1|CDw327 antigen|OTTHUMP00000164940|OTTHUMP00000164941|OTTHU
MP00000164942|Obesity-binding protein 1
