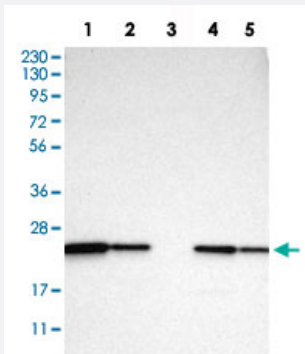


# PEBP1 polyclonal antibody

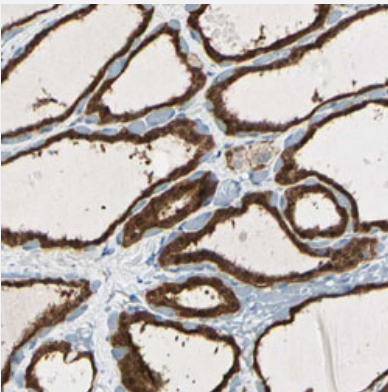
Catalog # PAB31406      Size 100 uL

## Applications



### Western Blot

Western Blot analysis of Lane 1: RT-4 cell, Lane 2: U-251 MG sp cell, Lane 3: human plasma tissue (IgG/HSA depleted), Lane 4: human liver tissue and Lane 5: human tonsil tissue lysates with PEBP1 polyclonal antibody (Cat # PAB31406).



### Immunohistochemistry (Formalin/PFA-fixed paraffin-embedded sections)

Immunohistochemical staining (Formalin-fixed paraffin-embedded sections) of human thyroid gland with PEBP1 polyclonal antibody (Cat # PAB31406) shows strong cytoplasmic positivity in glandular cells.

## Specification

<b>Product Description</b>	Rabbit polyclonal antibody raised against partial recombinant human PEBP1.
<b>Immunogen</b>	Recombinant protein corresponding to human PEBP1.
<b>Sequence</b>	PTQVKNRPTSISWDGLDSGKLYTLVLTDPDAPSRKDPKYREWHHFLVVNMKGNDISSGTVLSDYV GSGPPKGTGLHRYVWLVEQDRPLKCDEPILSNRSGDHRGKFKVASFRKKYELRAPVAGTCYQA EWDDYVPKLY
<b>Host</b>	Rabbit
<b>Reactivity</b>	Human

Form	Liquid
Purification	Antigen affinity purification
Isotype	IgG
Recommend Usage	Immunohistochemistry (Formalin/PFA-fixed paraffin-embedded sections) (1:200-1:500) Western Blot (1:100-1:250) The optimal working dilution should be determined by the end user.
Storage Buffer	In PBS, pH 7.2 (40% glycerol, 0.02% sodium azide).
Storage Instruction	Store at 4°C. For long term storage store at -20°C. Aliquot to avoid repeated freezing and thawing.
Note	This product contains sodium azide: a POISONOUS AND HAZARDOUS SUBSTANCE which should be handled by trained staff only.

## Applications

- Western Blot

Western Blot analysis of Lane 1: RT-4 cell, Lane 2: U-251 MG sp cell, Lane 3: human plasma tissue (IgG/HSA depleted), Lane 4: human liver tissue and Lane 5: human tonsil tissue lysates with PEBP1 polyclonal antibody (Cat # PAB31406).

- Immunohistochemistry (Formalin/PFA-fixed paraffin-embedded sections)

Immunohistochemical staining (Formalin-fixed paraffin-embedded sections) of human thyroid gland with PEBP1 polyclonal antibody (Cat # PAB31406) shows strong cytoplasmic positivity in glandular cells.

## Gene Info — PEBP1

Entrez GeneID	<a href="#">5037</a>
Protein Accession#	<a href="#">P30086</a>
Gene Name	PEBP1
Gene Alias	HCNP, PBP, PEBP, RKIP
Gene Description	phosphatidylethanolamine binding protein 1
Omim ID	<a href="#">604591</a>
Gene Ontology	<a href="#">Hyperlink</a>
Other Designations	Raf kinase inhibitory protein prostatic binding protein