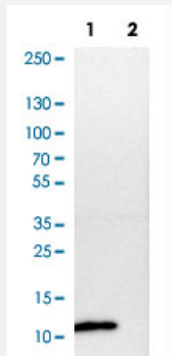


S100A4 polyclonal antibody

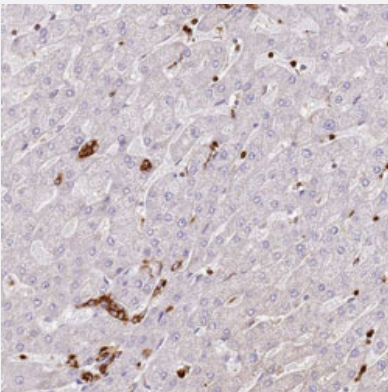
Catalog # PAB31397 Size 100 uL

Applications



Western Blot (Cell lysate)

Western Blot analysis of Lane 1: NIH-3T3 cell lysate (mouse embryonic fibroblast cells) and Lane 2: NBT-II cell lysate (Wistar rat bladder tumour cells) with S100A4 polyclonal antibody (Cat # PAB31397).



Immunohistochemistry (Formalin/PFA-fixed paraffin-embedded sections)

Immunohistochemical staining (Formalin-fixed paraffin-embedded sections) of human liver with S100A4 polyclonal antibody (Cat # PAB31397) shows strong cytoplasmic positivity in bile duct cells.

Specification

Product Description	Rabbit polyclonal antibody raised against partial recombinant human S100A4.
Immunogen	Recombinant protein corresponding to human S100A4.
Sequence	MACPLEKALDVMVSTFHKYSGKEGDKFKLNKSELKELLTRELP SFLGKRTDEAAFQKLMSNLDS NRDNEVDFQEYCVFLSCIAMMCNEFFEGFPDKQPRKK
Host	Rabbit
Reactivity	Human, Mouse, Rat

Form	Liquid
Purification	Antigen affinity purification
Isotype	IgG
Recommend Usage	Immunohistochemistry (Formalin/PFA-fixed paraffin-embedded sections) (1:1000-1:2500) Western Blot (1:100-1:250) The optimal working dilution should be determined by the end user.
Storage Buffer	In PBS, pH 7.2 (40% glycerol, 0.02% sodium azide).
Storage Instruction	Store at 4°C. For long term storage store at -20°C. Aliquot to avoid repeated freezing and thawing.
Note	This product contains sodium azide: a POISONOUS AND HAZARDOUS SUBSTANCE which should be handled by trained staff only.

Applications

- Western Blot (Cell lysate)

Western Blot analysis of Lane 1: NIH-3T3 cell lysate (mouse embryonic fibroblast cells) and Lane 2: NBT-II cell lysate (Wistar rat bladder tumour cells) with S100A4 polyclonal antibody (Cat # PAB31397).

- Immunohistochemistry (Formalin/PFA-fixed paraffin-embedded sections)

Immunohistochemical staining (Formalin-fixed paraffin-embedded sections) of human liver with S100A4 polyclonal antibody (Cat # PAB31397) shows strong cytoplasmic positivity in bile duct cells.

Gene Info — S100A4

Entrez GeneID	6275
Protein Accession#	P26447
Gene Name	S100A4
Gene Alias	18A2, 42A, CAPL, FSP1, MTS1, P9KA, PEL98
Gene Description	S100 calcium binding protein A4
Omim ID	114210
Gene Ontology	Hyperlink

Gene Summary

The protein encoded by this gene is a member of the S100 family of proteins containing 2 EF-hand calcium-binding motifs. S100 proteins are localized in the cytoplasm and/or nucleus of a wide range of cells, and involved in the regulation of a number of cellular processes such as cell cycle progression and differentiation. S100 genes include at least 13 members which are located as a cluster on chromosome 1q21. This protein may function in motility, invasion, and tubulin polymerization. Chromosomal rearrangements and altered expression of this gene have been implicated in tumor metastasis. Multiple alternatively spliced variants, encoding the same protein, have been identified. [provided by RefSeq]

Other Designations

OTTHUMP00000015467|OTTHUMP00000015468|OTTHUMP00000015469|OTTHUMP00000032895|S100 calcium binding protein A4 (calcium protein, calvasculin, metastasin, murine placental homolog)|S100 calcium-binding protein A4|S100 calcium-binding protein A4 (calcium prote

Publication Reference

- [Molecular transitions from papillomavirus infection to cervical precancer and cancer: Role of stromal estrogen receptor signaling.](#)

den Boon JA, Pyeon D, Wang SS, Horswill M, Schiffman M, Sherman M, Zuna RE, Wang Z, Hewitt SM, Pearson R, Schott M, Chung L, He Q, Lambert P, Walker J, Newton MA, Wentzensen N, Ahlquist P.

PNAS 2015 Jun; 112(25):E3255.

Application: IF, IHC-P, Human, Human cervical precancer and cancer, Human tissue microarray

- [Decidual PTEN expression is required for trophoblast invasion in the mouse.](#)

Lague MN, Detmar J, Paquet M, Boyer A, Richards JS, Adamson SL, Boerboom D.

American Journal of Physiology. Endocrinology and Metabolism 2010 Dec; 299(6):E936.

Application: IHC-P, Mouse, Mouse myometrium

Disease

- [Dermatitis](#)
- [Genetic Predisposition to Disease](#)
- [Liver Cirrhosis](#)