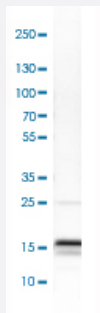


MAP1LC3A polyclonal antibody

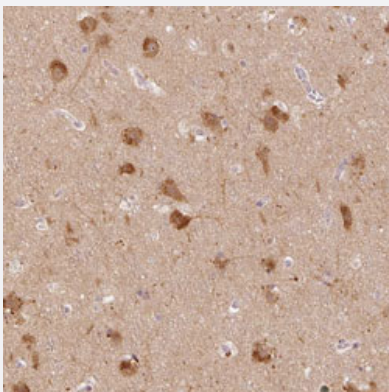
Catalog # PAB31392 Size 100 uL

Applications



Western Blot (Tissue lysate)

Western Blot analysis of human cerebral cortex tissue lysate with MAP1LC3A polyclonal antibody (Cat # PAB31392).



Immunohistochemistry (Formalin/PFA-fixed paraffin-embedded sections)

Immunohistochemical staining (Formalin-fixed paraffin-embedded sections) of human cerebral cortex with MAP1LC3A polyclonal antibody (Cat # PAB31392) shows strong cytoplasmic and nuclear positivity in neuronal cells.

Specification

Product Description	Rabbit polyclonal antibody raised against partial recombinant human MAP1LC3A.
Immunogen	Recombinant protein corresponding to human MAP1LC3A.
Sequence	MPSDRPFKQRRSFADRCKEVQQIRDQHPISKIPVIERKYKGEKQLPVLDKTKFLVPDHVNMS
Host	Rabbit
Reactivity	Human
Form	Liquid

Purification	Antigen affinity purification
Isotype	IgG
Recommend Usage	Immunohistochemistry (Formalin/PFA-fixed paraffin-embedded sections) (1:200-1:500) Western Blot (1:100-1:250) The optimal working dilution should be determined by the end user.
Storage Buffer	In PBS, pH 7.2 (40% glycerol, 0.02% sodium azide).
Storage Instruction	Store at 4°C. For long term storage store at -20°C. Aliquot to avoid repeated freezing and thawing.
Note	This product contains sodium azide: a POISONOUS AND HAZARDOUS SUBSTANCE which should be handled by trained staff only.

Applications

- Western Blot (Tissue lysate)

Western Blot analysis of human cerebral cortex tissue lysate with MAP1LC3A polyclonal antibody (Cat # PAB31392).

- Immunohistochemistry (Formalin/PFA-fixed paraffin-embedded sections)

Immunohistochemical staining (Formalin-fixed paraffin-embedded sections) of human cerebral cortex with MAP1LC3A polyclonal antibody (Cat # PAB31392) shows strong cytoplasmic and nuclear positivity in neuronal cells.

Gene Info — MAP1LC3A

Entrez GeneID	84557
Protein Accession#	Q9H492
Gene Name	MAP1LC3A
Gene Alias	LC3, LC3A, MAP1ALC3, MAP1BLC3
Gene Description	microtubule-associated protein 1 light chain 3 alpha
Omim ID	601242
Gene Ontology	Hyperlink
Gene Summary	MAP1A and MAP1B are microtubule-associated proteins which mediate the physical interactions between microtubules and components of the cytoskeleton. MAP1A and MAP1B each consist of a heavy chain subunit and multiple light chain subunits. The protein encoded by this gene is one of the light chain subunits and can associate with either MAP1A or MAP1B. Two transcript variants encoding different isoforms have been found for this gene. [provided by RefSeq]

Other Designations

MAP1 light chain 3-like protein 1|MAP1A/1B light chain 3 A|MAP1A/MAP1B LC3 A|OTTHUMP0000030696|OTTHUMP00000030697|OTTHUMP00000030698|microtubule-associated proteins 1A/1B light chain 3

Publication Reference

- [Granulovacuolar degeneration \(GVD\) bodies of Alzheimer's disease \(AD\) resemble late-stage autophagic organelles.](#)

Funk KE, Mrak RE, Kuret J.

Neuropathology and Applied Neurobiology 2011 Apr; 37(3):295.

Application: IF, IHC-P, Human, Human hippocampal sections