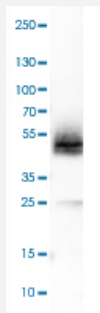


PDPN polyclonal antibody

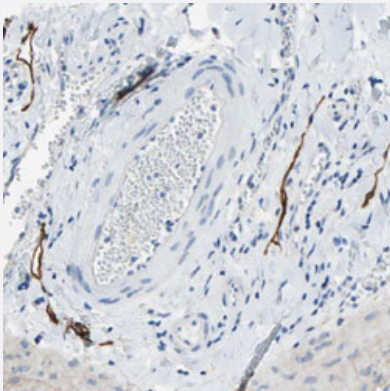
Catalog # PAB31389 Size 100 uL

Applications



Western Blot (Cell lysate)

Western Blot analysis of EFO-21 cell lysate with PDPN polyclonal antibody (Cat # PAB31389).



Immunohistochemistry (Formalin/PFA-fixed paraffin-embedded sections)

Immunohistochemical staining (Formalin-fixed paraffin-embedded sections) of human gall bladder with PDPN polyclonal antibody (Cat # PAB31389) shows distinct positivity in lymphatic vessels.

Specification

Product Description	Rabbit polyclonal antibody raised against partial recombinant human PDPN.
Immunogen	Recombinant protein corresponding to human PDPN.
Sequence	RLPRVWEARAPSLSGAPAPTPPAPPPSRSSRLGLWPRCFLIFPQLRILLGPQESNNSTGTMWK VSALLFVLGSASLWVLAEGASTGQPEDDTETTGLEGGVAMPGAEDDVVTPGTSEDYKSGLTTL VATSVNS
Host	Rabbit
Reactivity	Human

Form	Liquid
Purification	Antigen affinity purification
Isotype	IgG
Recommend Usage	Immunohistochemistry (Formalin/PFA-fixed paraffin-embedded sections) (1:200-1:500) Western Blot (1:250-1:500) The optimal working dilution should be determined by the end user.
Storage Buffer	In PBS, pH 7.2 (40% glycerol, 0.02% sodium azide).
Storage Instruction	Store at 4°C. For long term storage store at -20°C. Aliquot to avoid repeated freezing and thawing.
Note	This product contains sodium azide: a POISONOUS AND HAZARDOUS SUBSTANCE which should be handled by trained staff only.

Applications

- Western Blot (Cell lysate)

Western Blot analysis of EFO-21 cell lysate with PDPN polyclonal antibody (Cat # PAB31389).

- Immunohistochemistry (Formalin/PFA-fixed paraffin-embedded sections)

Immunohistochemical staining (Formalin-fixed paraffin-embedded sections) of human gall bladder with PDPN polyclonal antibody (Cat # PAB31389) shows distinct positivity in lymphatic vessels.

Gene Info — PDPN

Entrez GeneID	10630
Protein Accession#	Q86YL7
Gene Name	PDPN
Gene Alias	AGGRUS, GP36, GP40, Gp38, HT1A-1, OTS8, PA2.26, T1A, T1A-2
Gene Description	podoplanin
Omim ID	608863
Gene Ontology	Hyperlink

Gene Summary

This gene encodes a type-I integral membrane glycoprotein with diverse distribution in human tissues. The physiological function of this protein may be related to its mucin-type character. The homologous protein in other species has been described as a differentiation antigen and influenza-virus receptor. The specific function of this protein has not been determined but it has been proposed as a marker of lung injury. Alternatively spliced transcript variants encoding different isoforms have been identified. [provided by RefSeq]

Other Designations

OTTHUMP00000009640|OTTHUMP00000044504|glycoprotein, 36-KD|hT1alpha-1|hT1alpha-2|lung type I cell membrane associated glycoprotein|lung type-I cell membrane-associated glycoprotein|lung type-I cell membrane-associated glycoprotein (T1A-2)

Publication Reference

- [Structural and functional features of central nervous system lymphatic vessels.](#)

Louveau A, Smirnov I, Keyes TJ, Eccles JD, Rouhani SJ, Peske JD, Derecki NC, Castle D, Mandell JW, Lee KS, Harris TH, Kipnis J.

Nature 2015 Jul; 523(7560):337.

Application: IF, IHC-Fr, Human, Human brain, Human dura

Disease

- [Genetic Predisposition to Disease](#)
- [Lymphedema](#)
- [Ovarian Neoplasms](#)
- [Tobacco Use Disorder](#)