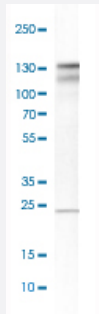


CDH6 polyclonal antibody

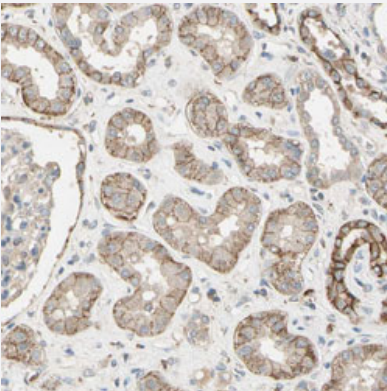
Catalog # PAB31388 Size 100 uL

Applications



Western Blot (Cell lysate)

Western Blot analysis of EFO-21 cell lysate with CDH6 polyclonal antibody (Cat # PAB31388).



Immunohistochemistry (Formalin/PFA-fixed paraffin-embedded sections)

Immunohistochemical staining (Formalin-fixed paraffin-embedded sections) of human kidney with CDH6 polyclonal antibody (Cat # PAB31388) shows distinct membranous positivity in cells in tubules.

Specification

Product Description	Rabbit polyclonal antibody raised against partial recombinant human CDH6.
Immunogen	Recombinant protein corresponding to human CDH6.
Sequence	ADVGENAEIEYSITDGEGLDMFDVITDQETQEGIIIVKKLLDFEKKKKVYTLKVEASNPYVEPRFLYLG PFKDSATVRMVVEDVDEPPVFSKLAYILQIREDAQINTTIGSVTAQDPDAARNP
Host	Rabbit
Reactivity	Human

Form	Liquid
Purification	Antigen affinity purification
Isotype	IgG
Recommend Usage	Immunohistochemistry (Formalin/PFA-fixed paraffin-embedded sections) (1:200-1:500) Western Blot (1:100-1:250) The optimal working dilution should be determined by the end user.
Storage Buffer	In PBS, pH 7.2 (40% glycerol, 0.02% sodium azide).
Storage Instruction	Store at 4°C. For long term storage store at -20°C. Aliquot to avoid repeated freezing and thawing.
Note	This product contains sodium azide: a POISONOUS AND HAZARDOUS SUBSTANCE which should be handled by trained staff only.

Applications

- Western Blot (Cell lysate)

Western Blot analysis of EFO-21 cell lysate with CDH6 polyclonal antibody (Cat # PAB31388).

- Immunohistochemistry (Formalin/PFA-fixed paraffin-embedded sections)

Immunohistochemical staining (Formalin-fixed paraffin-embedded sections) of human kidney with CDH6 polyclonal antibody (Cat # PAB31388) shows distinct membranous positivity in cells in tubules.

Gene Info — CDH6

Entrez GeneID	1004
Protein Accession#	P55285
Gene Name	CDH6
Gene Alias	KCAD
Gene Description	cadherin 6, type 2, K-cadherin (fetal kidney)
Omim ID	603007
Gene Ontology	Hyperlink

Gene Summary

This gene encodes a type II classical cadherin from the cadherin superfamily. The encoded membrane protein is a calcium dependent cell-cell adhesion glycoprotein comprised of five extracellular cadherin repeats, a transmembrane region and a highly conserved cytoplasmic tail. Cadherins mediate cell-cell binding in a homophilic manner, contributing to the sorting of heterogeneous cell types and the maintenance of orderly structures such as epithelium. Strong transcriptional expression of this gene has been observed in hepatocellular and renal carcinoma cell lines, suggesting a possible role in metastasis and invasion. [provided by RefSeq]

Other Designations

K-cadherin|cadherin 6, K-cadherin (fetal kidney)|cadherin 6, type 2|cadherin, fetal kidney|kidney cadherin

Publication Reference

- [Somatic mutational landscapes of adherens junctions and their functional consequences in cutaneous melanoma development.](#)

Praveen Kumar Korla, Chih-Chieh Chen, Daniel Esguerra Gracilla, Ming-Tsung Lai, Chih-Mei Chen, Huan Yuan Chen, Tritium Hwang, Shih-Yin Chen, Jim Jinn-Chyuan Sheu.

Theranostics 2020 Oct; 10(26):12026.

Application: IF, IHC-P, Human, Human melanoma

- [Candidate serological biomarkers for cancer identified from the secretomes of 23 cancer cell lines and the human protein atlas.](#)

Wu CC, Hsu CW, Chen CD, Yu CJ, Chang KP, Tai DI, Liu HP, Su WH, Chang YS, Yu JS.

Molecular & Cellular Proteomics 2010 Jun; 9(6):1100.

Application: IHC, Human, Colon, Liver, Bladder, Breast, Lung cancer