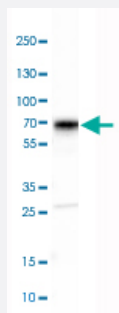


# SCG3 polyclonal antibody

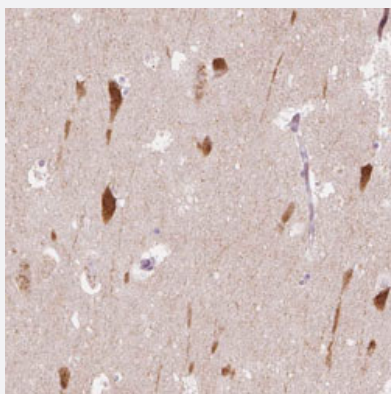
Catalog # PAB31379      Size 100 uL

## Applications



### Western Blot (Cell lysate)

Western Blot analysis of SH-SY5Y cell lysate with SCG3 polyclonal antibody (Cat # PAB31379).



### Immunohistochemistry (Formalin/PFA-fixed paraffin-embedded sections)

Immunohistochemical staining (Formalin-fixed paraffin-embedded sections) of human hippocampus with SCG3 polyclonal antibody (Cat # PAB31379) shows cytoplasmic positivity in neurons.

## Specification

<b>Product Description</b>	Rabbit polyclonal antibody raised against partial recombinant human SCG3.
<b>Immunogen</b>	Recombinant protein corresponding to human SCG3.
<b>Sequence</b>	LDGTPLTAEDIVHKIAARIYEENDRAVFDKIVSKLLNLGLITESQAHTLEDEVAEVLQKLISKEANNYE EDPNKPTSWTENQAGKIQEKVTPMAAIQDGLAKGE
<b>Host</b>	Rabbit
<b>Reactivity</b>	Human

Form	Liquid
Purification	Antigen affinity purification
Isotype	IgG
Recommend Usage	Immunohistochemistry (Formalin/PFA-fixed paraffin-embedded sections) (1:200-1:500) Western Blot (1:100-1:250) The optimal working dilution should be determined by the end user.
Storage Buffer	In PBS, pH 7.2 (40% glycerol, 0.02% sodium azide).
Storage Instruction	Store at 4°C. For long term storage store at -20°C. Aliquot to avoid repeated freezing and thawing.
Note	This product contains sodium azide: a POISONOUS AND HAZARDOUS SUBSTANCE which should be handled by trained staff only.

## Applications

- Western Blot (Cell lysate)

Western Blot analysis of SH-SY5Y cell lysate with SCG3 polyclonal antibody (Cat # PAB31379).

- Immunohistochemistry (Formalin/PFA-fixed paraffin-embedded sections)

Immunohistochemical staining (Formalin-fixed paraffin-embedded sections) of human hippocampus with SCG3 polyclonal antibody (Cat # PAB31379) shows cytoplasmic positivity in neurons.

## Gene Info — SCG3

Entrez GeneID	<a href="#">29106</a>
Protein Accession#	<a href="#">Q8WXD2</a>
Gene Name	SCG3
Gene Alias	FLJ90833, SGIII
Gene Description	secretogranin III
Gene Ontology	<a href="#">Hyperlink</a>
Gene Summary	The protein encoded by this gene is a member of the chromogranin/secretogranin family of neuroendocrine secretory proteins. Granins may serve as precursors for biologically active peptides. Some granins have been shown to function as helper proteins in sorting and proteolytic processing of prohormones; however, the function of this protein is unknown. Two transcript variants encoding different isoforms have been found for this gene. [provided by RefSeq]

Other Designations

-

## Publication Reference

- [Novel markers for enterochromaffin cells and gastrointestinal neuroendocrine carcinomas.](#)

Leja J, Essaghir A, Essand M, Wester K, Oberg K, Tötterman TH, Lloyd R, Vasmatazis G, Demoulin JB, Giandomenico V.  
Modern Pathology 2009 Feb; 22(2):261.

Application: IHC-P, Human, Human neuroendocrine carcinomas

## Disease

- [Obesity](#)