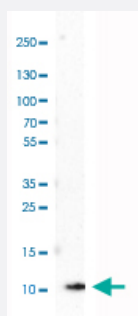


# S100A1 polyclonal antibody

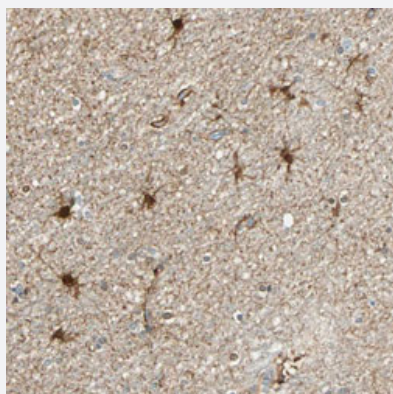
Catalog # PAB31375      Size 100 uL

## Applications



### Western Blot (Cell lysate)

Western Blot analysis of SK-MEL-30 cell lysate with S100A1 polyclonal antibody (Cat # PAB31375).



### Immunohistochemistry (Formalin/PFA-fixed paraffin-embedded sections)

Immunohistochemical staining (Formalin-fixed paraffin-embedded sections) of human hippocampus with S100A1 polyclonal antibody (Cat # PAB31375) shows nuclear and cytoplasmic positivity in subsets of glial cells.

## Specification

<b>Product Description</b>	Rabbit polyclonal antibody raised against partial recombinant human S100A1.
<b>Immunogen</b>	Recombinant protein corresponding to human S100A1.
<b>Sequence</b>	GSELETAMETLINVFHAHSGKEGDKYKLSKKELKELLQTELSGFLDAQKDQDVAVDKVMKELDEN GDGEVDFQEYVVLVAALTVACNNFFWENS
<b>Host</b>	Rabbit
<b>Reactivity</b>	Human

Form	Liquid
Purification	Antigen affinity purification
Isotype	IgG
Recommend Usage	Immunohistochemistry (Formalin/PFA-fixed paraffin-embedded sections) (1:50-1:200) Western Blot (1:100-1:250) The optimal working dilution should be determined by the end user.
Storage Buffer	In PBS, pH 7.2 (40% glycerol, 0.02% sodium azide).
Storage Instruction	Store at 4°C. For long term storage store at -20°C. Aliquot to avoid repeated freezing and thawing.
Note	This product contains sodium azide: a POISONOUS AND HAZARDOUS SUBSTANCE which should be handled by trained staff only.

## Applications

- Western Blot (Cell lysate)

Western Blot analysis of SK-MEL-30 cell lysate with S100A1 polyclonal antibody (Cat # PAB31375).

- Immunohistochemistry (Formalin/PFA-fixed paraffin-embedded sections)

Immunohistochemical staining (Formalin-fixed paraffin-embedded sections) of human hippocampus with S100A1 polyclonal antibody (Cat # PAB31375) shows nuclear and cytoplasmic positivity in subsets of glial cells.

## Gene Info — S100A1

Entrez GeneID	<a href="#">6271</a>
Protein Accession#	<a href="#">P23297</a>
Gene Name	S100A1
Gene Alias	S100, S100-alpha, S100A
Gene Description	S100 calcium binding protein A1
Omim ID	<a href="#">176940</a>
Gene Ontology	<a href="#">Hyperlink</a>

**Gene Summary**

The protein encoded by this gene is a member of the S100 family of proteins containing 2 EF-hand calcium-binding motifs. S100 proteins are localized in the cytoplasm and/or nucleus of a wide range of cells, and involved in the regulation of a number of cellular processes such as cell cycle progression and differentiation. S100 genes include at least 13 members which are located as a cluster on chromosome 1q21. This protein may function in stimulation of Ca<sup>2+</sup>-induced Ca<sup>2+</sup> release, inhibition of microtubule assembly, and inhibition of protein kinase C-mediated phosphorylation. Reduced expression of this protein has been implicated in cardiomyopathies. [provided by RefSeq]

**Other Designations**

OTTHUMP00000035100|S100 alpha|S100 calcium-binding protein A1|S100 protein, alpha polypeptide

**Publication Reference**

- [CD300f immunoreceptor contributes to peripheral nerve regeneration by the modulation of macrophage inflammatory phenotype.](#)

Peluffo H, Solari-Saquieres P, Negro-Demontel ML, Francos-Quijorna I, Navarro X, López-Vales R, Sayós J, Lago N. Journal of Neuroinflammation 2015 Aug; 12:145.

Application: IF, IHC, Mouse, Mouse sciatic nerve

**Disease**

- [Breast cancer](#)
- [Breast Neoplasms](#)
- [Dermatitis](#)
- [DNA Damage](#)
- [Genetic Predisposition to Disease](#)