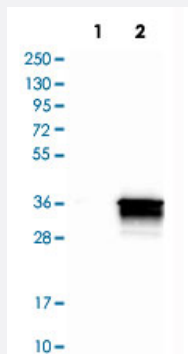


RASD2 polyclonal antibody

Catalog # PAB31370

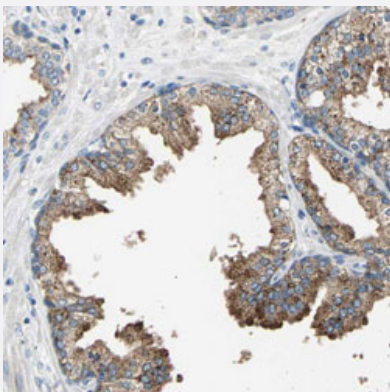
Size 100 uL

Applications



Western Blot (Transfected lysate)

Western Blot analysis of Lane 1: negative control (vector only transfected HEK293T cell lysate) and Lane 2: over-expression lysate (co-expressed with a C-terminal myc-DDK tag in mammalian HEK293T cells) with RASD2 polyclonal antibody (Cat # PAB31370).



Immunohistochemistry (Formalin/PFA-fixed paraffin-embedded sections)

Immunohistochemical staining (Formalin-fixed paraffin-embedded sections) of human prostate with RASD2 polyclonal antibody (Cat # PAB31370) shows moderate cytoplasmic positivity in glandular cells.

Specification

Product Description	Rabbit polyclonal antibody raised against partial recombinant human RASD2.
Immunogen	Recombinant protein corresponding to human RASD2.
Sequence	DTSGNHPPFAMRRRLSILTGDFILVFSLDNRESFDEVKRLQKQILEVKSCLNKTKEAAELPMVIC GNKNDHGELCRQVPTTEAELLVSGDENCAFYFEVSAKKNTNVDEM FYVLFSMAKLPHMSPALH RKISVQYGDAFHPRPFCMRRVKEMDAYGMVSPFARRPSVNSDLKYIKAKVLR
Host	Rabbit
Reactivity	Human

Form	Liquid
Purification	Antigen affinity purification
Isotype	IgG
Recommend Usage	Immunohistochemistry (Formalin/PFA-fixed paraffin-embedded sections) (1:200-1:500) Western Blot (1:100-1:250) The optimal working dilution should be determined by the end user.
Storage Buffer	In PBS, pH 7.2 (40% glycerol, 0.02% sodium azide).
Storage Instruction	Store at 4°C. For long term storage store at -20°C. Aliquot to avoid repeated freezing and thawing.
Note	This product contains sodium azide: a POISONOUS AND HAZARDOUS SUBSTANCE which should be handled by trained staff only.

Applications

- Western Blot (Transfected lysate)

Western Blot analysis of Lane 1: negative control (vector only transfected HEK293T cell lysate) and Lane 2: over-expression lysate (co-expressed with a C-terminal myc-DDK tag in mammalian HEK293T cells) with RASD2 polyclonal antibody (Cat # PAB31370).

- Immunohistochemistry (Formalin/PFA-fixed paraffin-embedded sections)

Immunohistochemical staining (Formalin-fixed paraffin-embedded sections) of human prostate with RASD2 polyclonal antibody (Cat # PAB31370) shows moderate cytoplasmic positivity in glandular cells.

Gene Info — RASD2

Entrez GeneID	23551
Protein Accession#	Q96D21
Gene Name	RASD2
Gene Alias	MGC:4834, Rhes, TEM2
Gene Description	RASD family, member 2
Gene Ontology	Hyperlink

Gene Summary

This gene encodes a Ras-related protein that enriched in striatum. The product of this gene binds to GTP and possesses intrinsic GTPase activity. The gene belongs to the Ras superfamily of small GTPases. The exact function of this gene is unknown, but most striatum-specific mRNAs characterized to date encode components of signal transduction cascades. [provided by RefSeq]

Other Designations

GTP-binding protein Rhes|Ras homolog enriched in striatum|tumor endothelial marker 2

Disease

- [Attention](#)
- [Genetic Predisposition to Disease](#)
- [Neuropsychological Tests](#)
- [Problem Solving](#)
- [Schizophrenia](#)