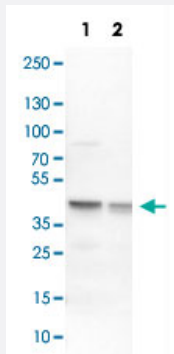


ECH1 polyclonal antibody

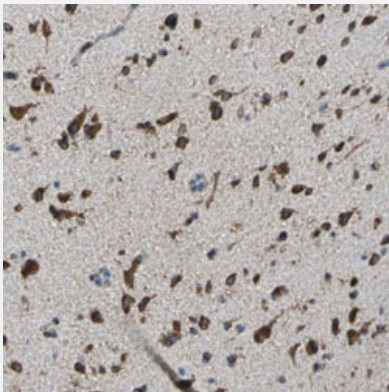
Catalog # PAB31369 Size 100 uL

Applications



Western Blot (Cell lysate)

Western Blot analysis of Lane 1: NIH-3T3 cell lysate (mouse embryonic fibroblast cells) and Lane 2: NBT-II cell lysate (Wistar rat bladder tumour cells) with ECH1 polyclonal antibody (Cat # PAB31369).



Immunohistochemistry (Formalin/PFA-fixed paraffin-embedded sections)

Immunohistochemical staining (Formalin-fixed paraffin-embedded sections) of human cerebral cortex with ECH1 polyclonal antibody (Cat # PAB31369) shows strong cytoplasmic immunoreactivity in neurons.

Specification

Product Description	Rabbit polyclonal antibody raised against partial recombinant human ECH1.
Immunogen	Recombinant protein corresponding to human ECH1.
Sequence	EVDVGLAADVGTLQRLPKVIGNQSLVNELAF TARKMMADEALGSGLVSRVFPDKEVMLDAALAL AAEISSKSPVAVQSTKVNLLYSRDHSVAESLNYVASWNMSMLQTQDLVKSVQATTENKELKTVTF
Host	Rabbit
Reactivity	Human, Mouse, Rat

Form	Liquid
Purification	Antigen affinity purification
Isotype	IgG
Recommend Usage	Immunohistochemistry (Formalin/PFA-fixed paraffin-embedded sections) (1:200-1:500) Western Blot (1:100-1:250) The optimal working dilution should be determined by the end user.
Storage Buffer	In PBS, pH 7.2 (40% glycerol, 0.02% sodium azide).
Storage Instruction	Store at 4°C. For long term storage store at -20°C. Aliquot to avoid repeated freezing and thawing.
Note	This product contains sodium azide: a POISONOUS AND HAZARDOUS SUBSTANCE which should be handled by trained staff only.

Applications

- Western Blot (Cell lysate)

Western Blot analysis of Lane 1: NIH-3T3 cell lysate (mouse embryonic fibroblast cells) and Lane 2: NBT-II cell lysate (Wistar rat bladder tumour cells) with ECH1 polyclonal antibody (Cat # PAB31369).

- Immunohistochemistry (Formalin/PFA-fixed paraffin-embedded sections)

Immunohistochemical staining (Formalin-fixed paraffin-embedded sections) of human cerebral cortex with ECH1 polyclonal antibody (Cat # PAB31369) shows strong cytoplasmic immunoreactivity in neurons.

Gene Info — ECH1

Entrez GeneID	1891
Protein Accession#	Q13011
Gene Name	ECH1
Gene Alias	HPXEL
Gene Description	enoyl Coenzyme A hydratase 1, peroxisomal
Omim ID	600696
Gene Ontology	Hyperlink

Gene Summary

This gene encodes a member of the hydratase/isomerase superfamily. The gene product shows high sequence similarity to enoyl-coenzyme A (CoA) hydratases of several species, particularly within a conserved domain characteristic of these proteins. The encoded protein, which contains a C-terminal peroxisomal targeting sequence, localizes to the peroxisome. The rat ortholog, which localizes to the matrix of both the peroxisome and mitochondria, can isomerize 3-trans,5-cis-dienoyl-CoA to 2-trans,4-trans-dienoyl-CoA, indicating that it is a delta3,5-delta2,4-dienoyl-CoA isomerase. This enzyme functions in the auxiliary step of the fatty acid beta-oxidation pathway. Expression of the rat gene is induced by peroxisome proliferators. [provided by RefSeq]

Other Designations

delta3,5-delta2,4-dienoyl-CoA isomerase|dienoyl-CoA isomerase|peroxisomal enoyl-CoA hydratase 1|peroxisomal enoyl-coenzyme A hydratase-like protein

Publication Reference

- [Systematic validation of antibody binding and protein subcellular localization using siRNA and confocal microscopy.](#)

Stadler C, Hjelmare M, Neumann B, Jonasson K, Pepperkok R, Uhlen M, Lundberg E.

Journal of Proteomics 2012 Apr; 75(7):2236.

- [Tissue profiling of the mammalian central nervous system using human antibody-based proteomics.](#)

Mulder J, Bjorling E, Jonasson K, Wernerus H, Hober S, Hokfelt T, Uhlen M.

Molecular & Cellular Proteomics 2009 Jul; 8(7):1612.

Application: IF, IHC-Fr, WB-Ti, Rat, Rat brain

Pathway

- [Tyrosine metabolism](#)