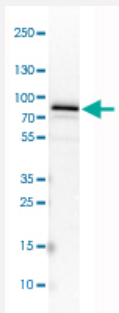


GYG2 polyclonal antibody

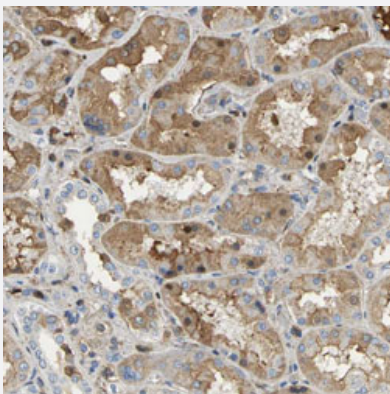
Catalog # PAB31363 Size 100 uL

Applications



Western Blot (Cell lysate)

Western Blot analysis of SK-MEL-30 cell lysate with GYG2 polyclonal antibody (Cat # PAB31363).



Immunohistochemistry (Formalin/PFA-fixed paraffin-embedded sections)

Immunohistochemical staining (Formalin-fixed paraffin-embedded sections) of human kidney with GYG2 polyclonal antibody (Cat # PAB31363) shows moderate cytoplasmic and nuclear positivity in cells in tubules.

Specification

| | |
|----------------------------|--|
| Product Description | Rabbit polyclonal antibody raised against partial recombinant human GYG2. |
| Immunogen | Recombinant protein corresponding to human GYG2. |
| Sequence | PAFKQFGSSAKVVHFLGSMKPWNYKYNPQSGSVLEQGSASSSQHQAFLHLWWTVYQNNVLP LYKSVQAGEARASPGHTLCHSDVGGPCADSASGVGEPCEENSTPSAGVPCANSPLGSNQPAQG LPEPTQIVDETL |
| Host | Rabbit |
| Reactivity | Human |

| | |
|---------------------|---|
| Form | Liquid |
| Purification | Antigen affinity purification |
| Isotype | IgG |
| Recommend Usage | Immunohistochemistry (Formalin/PFA-fixed paraffin-embedded sections) (1:500-1:1000) Western Blot (1:250-1:500) The optimal working dilution should be determined by the end user. |
| Storage Buffer | In PBS, pH 7.2 (40% glycerol, 0.02% sodium azide). |
| Storage Instruction | Store at 4°C. For long term storage store at -20°C. Aliquot to avoid repeated freezing and thawing. |
| Note | This product contains sodium azide: a POISONOUS AND HAZARDOUS SUBSTANCE which should be handled by trained staff only. |

Applications

- Western Blot (Cell lysate)

Western Blot analysis of SK-MEL-30 cell lysate with GYG2 polyclonal antibody (Cat # PAB31363).

- Immunohistochemistry (Formalin/PFA-fixed paraffin-embedded sections)

Immunohistochemical staining (Formalin-fixed paraffin-embedded sections) of human kidney with GYG2 polyclonal antibody (Cat # PAB31363) shows moderate cytoplasmic and nuclear positivity in cells in tubules.

Gene Info — GYG2

| | |
|--------------------|---------------------------|
| Entrez GeneID | 8908 |
| Protein Accession# | O15488 |
| Gene Name | GYG2 |
| Gene Alias | GN-2, GN2 |
| Gene Description | glycogenin 2 |
| Omim ID | 300198 |
| Gene Ontology | Hyperlink |
| Other Designations | OTTHUMP00000022853 |