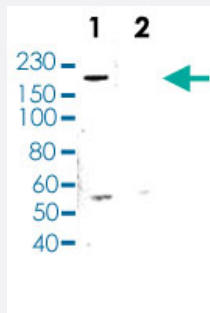


TET3 polyclonal antibody

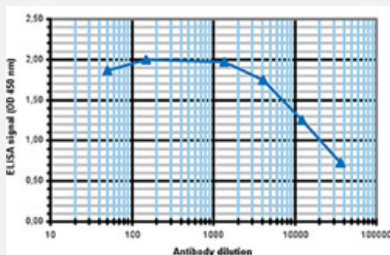
Catalog # PAB31339 Size 50 ug

Applications



Western Blot (Cell lysate)

Western Blot (Cell lysate) analysis of (1) 25 ug whole cell extracts of Jurkat cells, (2) incubation of the antibody with the immunizing peptides.



Enzyme-linked Immunoabsorbent Assay

ELISA is a quantitative method used to determine the titer of the antibody using a serial dilution of antibody against TET3. The plates were coated with the peptide used for immunization of the rabbit. By plotting the absorbance against the antibody dilution, the titer of the antibody was estimated to be 1:20300.

Specification

Product Description	Rabbit polyclonal antibody raised against synthetic peptide of TET3.
Immunogen	A synthetic peptide (conjugated with KLH) corresponding to different parts of TET3.
Host	Rabbit
Reactivity	Human
Form	Liquid
Purification	Affinity purification

Recommend Usage	ELISA (1:1000) Western Blot (1:1000) The optimal working dilution should be determined by the end user.
Storage Buffer	In PBS (0.05% sodium azide, 0.05% proclin 300).
Storage Instruction	Store at -20°C. For long term storage store at -80°C. Aliquot to avoid repeated freezing and thawing.
Note	This product contains sodium azide: a POISONOUS AND HAZARDOUS SUBSTANCE which should be handled by trained staff only.

Applications

- Western Blot (Cell lysate)

Western Blot (Cell lysate) analysis of (1) 25 ug whole cell extracts of Jurkat cells, (2) incubation of the antibody with the immunizing peptides.

- Enzyme-linked Immunoabsorbent Assay

ELISA is a quantitative method used to determine the titer of the antibody using a serial dilution of antibody against TET3. The plates were coated with the peptide used for immunization of the rabbit. By plotting the absorbance against the antibody dilution, the titer of the antibody was estimated to be 1:20300.

Gene Info — TET3

Entrez GeneID	200424
Protein Accession#	O43151
Gene Name	TET3
Gene Alias	KIAA0401, MGC22014
Gene Description	tet oncogene family member 3
Gene Ontology	Hyperlink
Other Designations	-

Disease

- [Leukemia](#)

- [Myeloproliferative Disorders](#)
- [Tobacco Use Disorder](#)