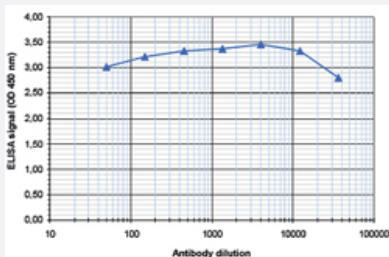


Histone H3 (phospho T45) polyclonal antibody

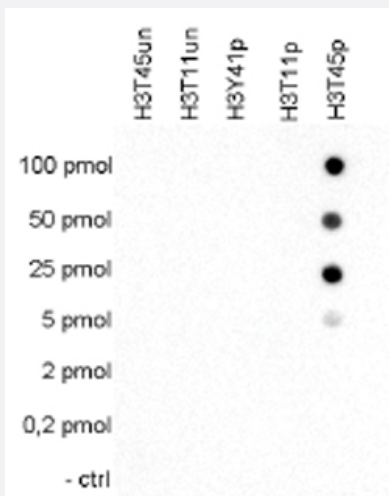
Catalog # PAB31327 Size 50 ug

Applications



Enzyme-linked Immunoabsorbent Assay

ELISA is a quantitative method used to determine the titer of the antibody using a serial dilution of antibody against Histone H3 (phospho T45) in antigen coated wells. The antigen used was a peptide containing the histone modification of interest. By plotting the absorbance against the antibody dilution, the titer of the antibody was estimated to be 1:350000.



Dot Blot

Cross reactivity test using the Histone H3 (phospho T45) antibody. Dot Blot analysis was performed with peptides containing other histone modifications and the unmodified H3T45. One hundred to 0.2 pmol of the respective peptides were spotted on a membrane. The antibody was used at a dilution of 1:20000. The figure shows a high specificity of the antibody for the modification of interest.

Specification

Product Description	Rabbit polyclonal antibody raised against synthetic peptide of Histone H3 (phospho T45).
Immunogen	A synthetic peptide (conjugated with KLH) corresponding to Histone H3, phosphorylated at threonine 45.
Host	Rabbit
Reactivity	Human

Form	Liquid
Purification	Affinity purification
Recommend Usage	ELISA (1:5000-10000) Dot Blot (1:20000) The optimal working dilution should be determined by the end user.
Storage Buffer	In PBS (0.05% sodium azide, 0.05% proclin 300).
Storage Instruction	Store at -20°C. For long term storage store at -80°C. Aliquot to avoid repeated freezing and thawing.
Note	This product contains sodium azide: a POISONOUS AND HAZARDOUS SUBSTANCE which should be handled by trained staff only.

Applications

- Enzyme-linked Immunoabsorbent Assay

ELISA is a quantitative method used to determine the titer of the antibody using a serial dilution of antibody against Histone H3 (phospho T45) in antigen coated wells. The antigen used was a peptide containing the histone modification of interest. By plotting the absorbance against the antibody dilution, the titer of the antibody was estimated to be 1:350000.

- Dot Blot

Cross reactivity test using the Histone H3 (phospho T45) antibody.

Dot Blot analysis was performed with peptides containing other histone modifications and the unmodified H3T45. One hundred to 0.2 pmol of the respective peptides were spotted on a membrane. The antibody was used at a dilution of 1:20000. The figure shows a high specificity of the antibody for the modification of interest.

Gene Info — HIST1H3A

Entrez GeneID	8350
Protein Accession#	Q93081
Gene Name	HIST1H3A
Gene Alias	H3/A, H3FA
Gene Description	histone cluster 1, H3a
Omim ID	602810
Gene Ontology	Hyperlink

Gene Summary

Histones are basic nuclear proteins that are responsible for the nucleosome structure of the chromosomal fiber in eukaryotes. This structure consists of approximately 146 bp of DNA wrapped around a nucleosome, an octamer composed of pairs of each of the four core histones (H2A, H2B, H3, and H4). The chromatin fiber is further compacted through the interaction of a linker histone, H1, with the DNA between the nucleosomes to form higher order chromatin structures. This gene is intronless and encodes a member of the histone H3 family. Transcripts from this gene lack polyA tails; instead, they contain a palindromic termination element. This gene is found in the large histone gene cluster on chromosome 6p22-p21.3. [provided by RefSeq]

Other Designations

H3 histone family, member A|histone 1, H3a

Pathway

- [Systemic lupus erythematosus](#)