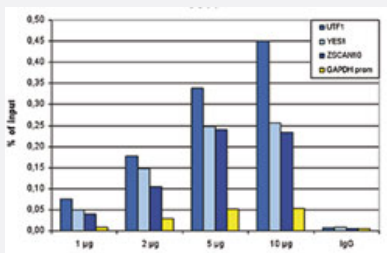


# POU5F1 polyclonal antibody

Catalog # PAB31278

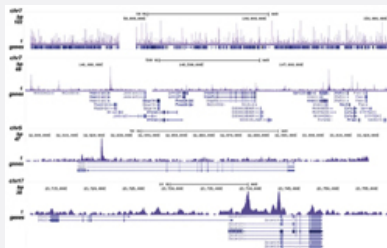
Size 50 ug

## Applications



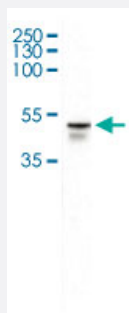
## ChIP

ChIP assays were performed using E14Tg2a mouse embryonic stem cells. A titration of the antibody consisting of 1, 2, 5 and 10 ug per ChIP experiment was analysed. IgG (2 ug/IP) was used as negative IP control. Quantitative PCR was performed with primers for known OCT4 targets UTF1, YES1 and ZSCAN10, used as positive control targets, and for the promoter of the GAPDH gene, used as a negative control. The Figure shows the recovery, expressed as a % of input (the relative amount of immunoprecipitated DNA compared to input DNA after qPCR analysis).



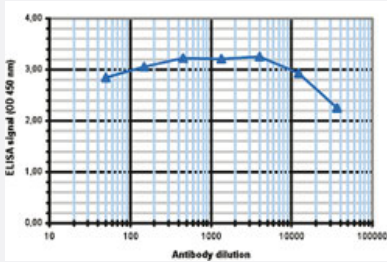
## ChIP-Seq

ChIP was performed on sheared chromatin from 4 million E14Tg2a mouse embryonic stem cells using 5 ug antibody. The figure shows the peak distribution along the complete sequence of mouse chromosome 7 and a 1Mb region containing the UTF1 positive control, and in a two genomic regions surrounding the YES1 and ZSCAN10 positive control genes.



## Western Blot (Cell lysate)

Western Blot (Cell lysate) analysis of nuclear extracts of human embryonic stem cells.



## Enzyme-linked Immunoabsorbent Assay

ELISA is a quantitative method used to determine the titer of the antibody using a serial dilution of antibody against POU5F1. The plates were coated with the peptides used for immunization of the rabbit. By plotting the absorbance against the antibody dilution, the titer of the antibody was estimated to be 1:100000.

## Specification

<b>Product Description</b>	Rabbit polyclonal antibody raised against synthetic peptide of POU5F1.
<b>Immunogen</b>	A synthetic peptide (conjugated with KLH) corresponding to different parts of human POU5F1.
<b>Host</b>	Rabbit
<b>Reactivity</b>	Human
<b>Form</b>	Liquid
<b>Purification</b>	Affinity purification
<b>Recommend Usage</b>	ELISA (1:1000-10000) Western Blot (1:1000) ChIP (5 ug/CHIP) The optimal working dilution should be determined by the end user.
<b>Storage Buffer</b>	In PBS (0.05% sodium azide, 0.05% proclin 300).
<b>Storage Instruction</b>	Store at -20°C. For long term storage store at -80°C. Aliquot to avoid repeated freezing and thawing.
<b>Note</b>	This product contains sodium azide: a POISONOUS AND HAZARDOUS SUBSTANCE which should be handled by trained staff only.

## Applications

- ChIP

ChIP assays were performed using E14Tg2a mouse embryonic stem cells. A titration of the antibody consisting of 1, 2.5 and 10 ug per ChIP experiment was analysed. IgG (2 ug/IP) was used as negative IP control. Quantitative PCR was performed with primers for known OCT4 targets UTF1, YES1 and ZSCAN10, used as positive control targets, and for the promoter of the GAPDH gene, used as a negative control. The Figure shows the recovery, expressed as a % of input (the relative amount of immunoprecipitated DNA compared to input DNA after qPCR analysis).

- ChIP-Seq

ChIP was performed on sheared chromatin from 4 million E14Tg2a mouse embryonic stem cells using 5 ug antibody. The figure shows the peak distribution along the complete sequence of mouse chromosome 7 and a 1Mb region containing the UTF1 positive control, and in a two genomic regions surrounding the YES1 and ZSCAN10 positive control genes.

- Western Blot (Cell lysate)

Western Blot (Cell lysate) analysis of nuclear extracts of human embryonic stem cells.

- Enzyme-linked Immunoabsorbent Assay

ELISA is a quantitative method used to determine the titer of the antibody using a serial dilution of antibody against POU5F1. The plates were coated with the peptides used for immunization of the rabbit. By plotting the absorbance against the antibody dilution, the titer of the antibody was estimated to be 1:100000.

## Gene Info — POU5F1

Entrez GeneID	<a href="#">5460</a>
Protein Accession#	<a href="#">Q01860</a>
Gene Name	POU5F1
Gene Alias	MGC22487, OCT3, OCT4, OTF3, OTF4
Gene Description	POU class 5 homeobox 1
Omim ID	<a href="#">164177</a>
Gene Ontology	<a href="#">Hyperlink</a>
Gene Summary	class 5
Other Designations	OTTHUMP00000029292 POU domain, class 5, transcription factor 1 POU-type homeodomain-containing DNA-binding protein octamer-binding transcription factor-3

## Publication Reference

- [Reversion to an embryonic alternative splicing program enhances leukemia stem cell self-renewal.](#)

Holm F et al.

PNAS 2015 Dec; 112(50):15444.

Application: ICC, ChIP, Human, Human chronic myeloid leukemia cells, Human embryonic stem cells

## Disease

- [Abortion](#)
- [Genetic Predisposition to Disease](#)
- [Lupus Erythematosus](#)
- [Psoriasis](#)
- [Tobacco Use Disorder](#)