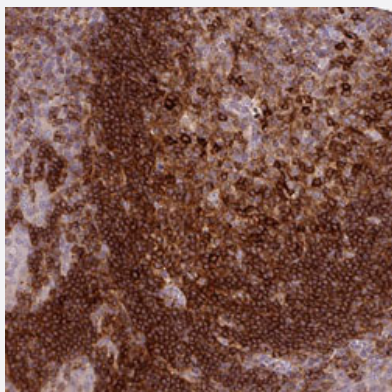


# CXCR5 polyclonal antibody

Catalog # PAB31252      Size 100 uL

## Applications



### Immunohistochemistry (Formalin/PFA-fixed paraffin-embedded sections)

Immunohistochemical staining (Formalin-fixed paraffin-embedded sections) of human tonsil with CXCR5 polyclonal antibody (Cat # PAB31252) shows strong cytoplasmic positivity in germinal center cells and non-germinal center cells.

## Specification

<b>Product Description</b>	Rabbit polyclonal antibody raised against partial recombinant human CXCR5.
<b>Immunogen</b>	Recombinant protein corresponding to human CXCR5.
<b>Sequence</b>	MNYPLTLEMDLENLEDLFWELDRLDNYNDTSLVENHLCPATEGPLMASFKAVF
<b>Host</b>	Rabbit
<b>Reactivity</b>	Human
<b>Form</b>	Liquid
<b>Purification</b>	Antigen affinity purification
<b>Isotype</b>	IgG
<b>Recommend Usage</b>	Immunohistochemistry (Formalin/PFA-fixed paraffin-embedded sections) (1:1000-1:2500) The optimal working dilution should be determined by the end user.
<b>Storage Buffer</b>	In PBS, pH 7.2 (40% glycerol, 0.02% sodium azide).

**Storage Instruction**

Store at 4°C for short term storage. For long term storage store at -20°C.  
Aliquot to avoid repeated freezing and thawing.

**Note**

This product contains sodium azide: a POISONOUS AND HAZARDOUS SUBSTANCE which should be handled by trained staff only.

## Applications

- Immunohistochemistry (Formalin/PFA-fixed paraffin-embedded sections)

Immunohistochemical staining (Formalin-fixed paraffin-embedded sections) of human tonsil with CXCR5 polyclonal antibody (Cat # PAB31252) shows strong cytoplasmic positivity in germinal center cells and non-germinal center cells.

## Gene Info — CXCR5

**Entrez GeneID**[643](#)**Protein Accession#**[P32302](#)**Gene Name**

CXCR5

**Gene Alias**

BLR1, CD185, MDR15, MGC117347

**Gene Description**

chemokine (C-X-C motif) receptor 5

**Omim ID**[601613](#)**Gene Ontology**[Hyperlink](#)**Gene Summary**

This gene was identified as a gene specifically expressed in Burkitt's lymphoma and lymphatic tissues. The protein encoded by this gene is predicted to be a seven transmembrane G protein-coupled receptor and belongs to the CXC chemokine receptor family. BLC, a B-lymphocyte chemoattractant, was identified to be a specific ligand for this receptor. Studies of this gene and its mouse counterpart strongly suggest the essential function of this gene in B cell migration and localization within specific anatomic compartments, such as follicles in lymph nodes as well as in spleen. Two alternatively spliced variants of this gene exist. [provided by RefSeq]

**Other Designations**

Burkitt lymphoma receptor 1|Burkitt lymphoma receptor 1, GTP binding protein (chemokine (C-X-C motif) receptor 5)|Burkitt lymphoma receptor 1, GTP-binding protein|C-X-C chemokine receptor type 5|monocyte-derived receptor 15

## Pathway

- [Chemokine signaling pathway](#)

- [Cytokine-cytokine receptor interaction](#)

## Disease

- [Cardiovascular Diseases](#)
- [Diabetes Mellitus](#)
- [Edema](#)
- [Genetic Predisposition to Disease](#)