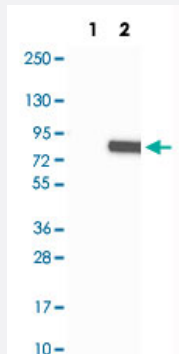


SEMA7A polyclonal antibody

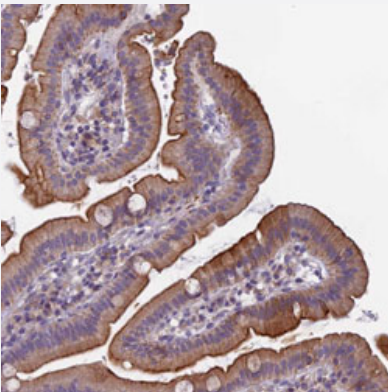
Catalog # PAB31251 Size 100 uL

Applications



Western Blot (Transfected lysate)

Western Blot analysis of Lane 1: negative control (vector only transfected HEK293T cell lysate) and Lane 2: over-expression lysate (co-expressed with a C-terminal myc-DDK tag in mammalian HEK293T cells) with SEMA7A polyclonal antibody (Cat # PAB31251).



Immunohistochemistry (Formalin/PFA-fixed paraffin-embedded sections)

Immunohistochemical staining (Formalin-fixed paraffin-embedded sections) of human duodenum with SEMA7A polyclonal antibody (Cat # PAB31251) shows distinct cytoplasmic and membranous positivity in glandular cells.

Specification

Product Description	Rabbit polyclonal antibody raised against partial recombinant human SEMA7A.
Immunogen	Recombinant protein corresponding to human SEMA7A.
Sequence	QDRVDFGQTEPHTVLFHEPGSSSVWVGGRGKVYLFDFPEGKNASVRTVNIGSTKGSCLDKRDC ENYITLLERRSEGLLACGTNARHPSCWNLVNGTVVPLGEMRGYAPFSPDENSLVLFEGD
Host	Rabbit
Reactivity	Human

Form	Liquid
Purification	Antigen affinity purification
Isotype	IgG
Recommend Usage	Immunohistochemistry (Formalin/PFA-fixed paraffin-embedded sections) (1:50-1:200) Western Blot (1:100-1:250) The optimal working dilution should be determined by the end user.
Storage Buffer	In PBS, pH 7.2 (40% glycerol, 0.02% sodium azide).
Storage Instruction	Store at 4°C for short term storage. For long term storage store at -20°C. Aliquot to avoid repeated freezing and thawing.
Note	This product contains sodium azide: a POISONOUS AND HAZARDOUS SUBSTANCE which should be handled by trained staff only.

Applications

- Western Blot (Transfected lysate)

Western Blot analysis of Lane 1: negative control (vector only transfected HEK293T cell lysate) and Lane 2: over-expression lysate (co-expressed with a C-terminal myc-DDK tag in mammalian HEK293T cells) with SEMA7A polyclonal antibody (Cat # PAB31251).

- Immunohistochemistry (Formalin/PFA-fixed paraffin-embedded sections)

Immunohistochemical staining (Formalin-fixed paraffin-embedded sections) of human duodenum with SEMA7A polyclonal antibody (Cat # PAB31251) shows distinct cytoplasmic and membranous positivity in glandular cells.

Gene Info — SEMA7A

Entrez GeneID	8482
Protein Accession#	O75326
Gene Name	SEMA7A
Gene Alias	CD108, CDw108, H-SEMA-K1, H-Sema-L, JMH, MGC126692, MGC126696, SEMAK1, SEMA L
Gene Description	semaphorin 7A, GPI membrane anchor (John Milton Hagen blood group)
Omim ID	607961
Gene Ontology	Hyperlink

Gene Summary

The protein encoded by this gene binds to cell surfaces through a glycosylphosphatidylinositol (GPI) linkage. The encoded glycoprotein is found on activated lymphocytes and erythrocytes. This protein may be involved in immunomodulatory and neuronal processes. Defects in this gene can result in loss of bone mineral density (BMD). Three transcript variants encoding different isoforms have been found for this gene

Other Designations

John Milton Hagen blood group H-Sema K1|sema domain, immunoglobulin domain (Ig), and GPI membrane anchor, (semaphorin) 7A (JMH blood group)|sema domain, immunoglobulin domain (Ig), and GPI membrane anchor, 7A|semaphorin 7A|semaphorin K1|semaphorin L

Pathway

- [Axon guidance](#)

Disease

- [Fractures](#)
- [Genetic Predisposition to Disease](#)
- [Osteoporosis](#)