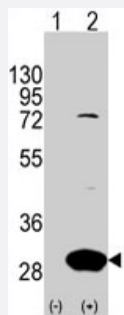


# LXN polyclonal antibody

Catalog # PAB3125

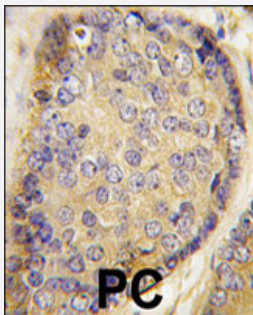
Size 400 uL

## Applications



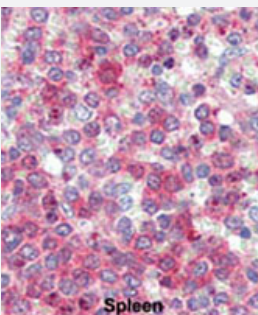
### Western Blot (Transfected lysate)

Western blot analysis of Latexin (arrow) using LXN polyclonal antibody (Cat # PAB3125). 293 cell lysates (2 ug/lane) either nontransfected (Lane 1) or transiently transfected with the LXN gene (Lane 2) (Origene Technologies).



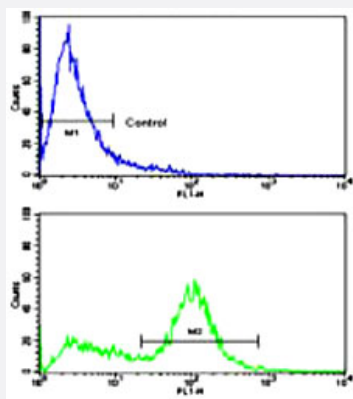
### Immunohistochemistry (Formalin/PFA-fixed paraffin-embedded sections)

Formalin-fixed and paraffin-embedded human prostate carcinoma tissue reacted with LXN polyclonal antibody (Cat # PAB3125), which was peroxidase-conjugated to the secondary antibody, followed by DAB staining. This data demonstrates the use of this antibody for immunohistochemistry; clinical relevance has not been evaluated.



### Immunohistochemistry (Formalin/PFA-fixed paraffin-embedded sections)

Formalin-fixed and paraffin-embedded human spleen reacted with LXN polyclonal antibody (Cat # PAB3125), which was peroxidase-conjugated to the secondary antibody, followed by AEC staining. This data demonstrates the use of this antibody for immunohistochemistry; clinical relevance has not been evaluated.



## Flow Cytometry

Flow cytometric analysis of WiDr cells using LXN polyclonal antibody (Cat # PAB3125)(bottom histogram) compared to a negative control cell (top histogram).

FITC-conjugated goat-anti-rabbit secondary antibodies were used for the analysis.

## Specification

<b>Product Description</b>	Rabbit polyclonal antibody raised against synthetic peptide of LXN.
<b>Immunogen</b>	A synthetic peptide (conjugated with KLH) corresponding to internal region of human LXN.
<b>Host</b>	Rabbit
<b>Reactivity</b>	Human
<b>Form</b>	Liquid
<b>Purification</b>	Protein A purification
<b>Recommend Usage</b>	Western Blot (1:1000) Immunohistochemistry (1:10-50) Flow cytometry (1:10-50) The optimal working dilution should be determined by the end user.
<b>Storage Buffer</b>	In PBS (0.09% sodium azide)
<b>Storage Instruction</b>	Store at 4°C. For long term storage store at -20°C. Aliquot to avoid repeated freezing and thawing.
<b>Note</b>	This product contains sodium azide: a POISONOUS AND HAZARDOUS SUBSTANCE which should be handled by trained staff only.

## Applications

### ● Western Blot (Transfected lysate)

Western blot analysis of Latexin (arrow) using LXN polyclonal antibody (Cat # PAB3125). 293 cell lysates (2 ug/lane) either nontransfected (Lane 1) or transiently transfected with the LXN gene (Lane 2) (Origene Technologies).

- Immunohistochemistry (Formalin/PFA-fixed paraffin-embedded sections)

Formalin-fixed and paraffin-embedded human prostate carcinoma tissue reacted with LXN polyclonal antibody (Cat # PAB3125) , which was peroxidase-conjugated to the secondary antibody, followed by DAB staining. This data demonstrates the use of this antibody for immunohistochemistry; clinical relevance has not been evaluated.

- Immunohistochemistry (Formalin/PFA-fixed paraffin-embedded sections)

Formalin-fixed and paraffin-embedded human spleenreacted with LXN polyclonal antibody (Cat # PAB3125), which was peroxidase-conjugated to the secondary antibody, followed by AEC staining.

This data demonstrates the use of this antibody for immunohistochemistry; clinical relevance has not been evaluated.

- Flow Cytometry

Flow cytometric analysis of WiDr cells using LXN polyclonal antibody (Cat # PAB3125)(bottom histogram) compared to a negative control cell (top histogram).

FITC-conjugated goat-anti-rabbit secondary antibodies were used for the analysis.

## Gene Info — LXN

**Entrez GeneID** [56925](#)

**Protein Accession#** [NP\\_064554;Q9BS40](#)

**Gene Name** LXN

**Gene Alias** ECI, TCI

**Gene Description** latexin

**Omim ID** [609305](#)

**Gene Ontology** [Hyperlink](#)

**Gene Summary** This gene encodes the only known protein inhibitor of zinc-dependent metallopeptidases. [provided by RefSeq]

**Other Designations** endogenous carboxypeptidase inhibitor

## Publication Reference

- [Structure of human carboxypeptidase A4 with its endogenous protein inhibitor, latexin.](#)

Pallarès I, Bonet R, García-Castellanos R, Ventura S, Avilés FX, Vendrell J, Gomis-Rüth FX.

PNAS 2005 Mar; 102(11):3978.