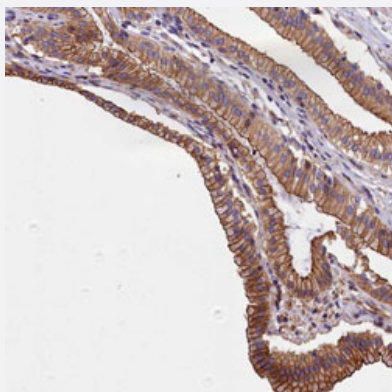


# BLACE polyclonal antibody

Catalog # PAB31245      Size 100 uL

## Applications



### Immunohistochemistry (Formalin/PFA-fixed paraffin-embedded sections)

Immunohistochemical staining (Formalin-fixed paraffin-embedded sections) of human gall bladder with BLACE polyclonal antibody (Cat # PAB31245) shows distinct cytoplasmic and membranous positivity in glandular cells.

## Specification

Product Description	Rabbit polyclonal antibody raised against partial recombinant human BLACE.
Immunogen	Recombinant protein corresponding to human BLACE.
Sequence	HAWLYLTRHFPWSPFPHGGWTDTSSEPCVLETGGSSLAALWGNSLWVQSSGACAFVCYESLIE QSLPNERFEELLGSPGEVM
Host	Rabbit
Reactivity	Human
Form	Liquid
Purification	Antigen affinity purification
Isotype	IgG
Recommend Usage	Immunohistochemistry (Formalin/PFA-fixed paraffin-embedded sections) (1:200-1:500) The optimal working dilution should be determined by the end user.
Storage Buffer	In PBS, pH 7.2 (40% glycerol, 0.02% sodium azide).

**Storage Instruction**

Store at 4°C for short term storage. For long term storage store at -20°C.  
Aliquot to avoid repeated freezing and thawing.

**Note**

This product contains sodium azide: a POISONOUS AND HAZARDOUS SUBSTANCE which should be handled by trained staff only.

## Applications

- Immunohistochemistry (Formalin/PFA-fixed paraffin-embedded sections)

Immunohistochemical staining (Formalin-fixed paraffin-embedded sections) of human gall bladder with BLACE polyclonal antibody (Cat # PAB31245) shows distinct cytoplasmic and membranous positivity in glandular cells.

## Gene Info — BLACE

**Entrez GeneID**[338436](#)**Protein Accession#**[A4D250](#)**Gene Name**

BLACE

**Gene Alias**

-

**Gene Description**

B-cell acute lymphoblastic leukemia expressed

**Omim ID**[608450](#)**Gene Ontology**[Hyperlink](#)**Other Designations**

-