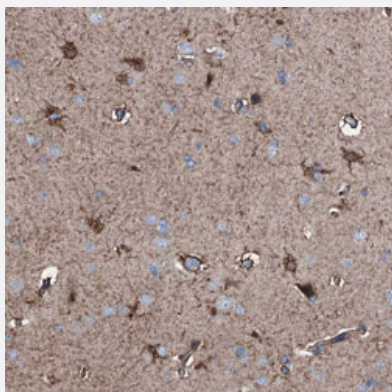


# C1QTNF4 polyclonal antibody

Catalog # PAB31238

Size 100 uL

## Applications



### Immunohistochemistry (Formalin/PFA-fixed paraffin-embedded sections)

Immunohistochemical staining (Formalin-fixed paraffin-embedded sections) of human cerebral cortex with C1QTNF4 polyclonal antibody (Cat # PAB31238) shows strong cytoplasmic positivity in glial cells.

## Specification

Product Description	Rabbit polyclonal antibody raised against partial recombinant human C1QTNF4.
Immunogen	Recombinant protein corresponding to human C1QTNF4.
Sequence	GPGSSELRSAFSAARTTPLEGTSEMAVTFDKVYVNIGGDFDVATGQFRCRVPGAYFFSFT
Host	Rabbit
Reactivity	Human
Form	Liquid
Purification	Antigen affinity purification
Isotype	IgG
Recommend Usage	Immunohistochemistry (Formalin/PFA-fixed paraffin-embedded sections) (1:50-1:200) The optimal working dilution should be determined by the end user.
Storage Buffer	In PBS, pH 7.2 (40% glycerol, 0.02% sodium azide).

**Storage Instruction**

Store at 4°C for short term storage. For long term storage store at -20°C.  
Aliquot to avoid repeated freezing and thawing.

**Note**

This product contains sodium azide: a POISONOUS AND HAZARDOUS SUBSTANCE which should be handled by trained staff only.

## Applications

- Immunohistochemistry (Formalin/PFA-fixed paraffin-embedded sections)

Immunohistochemical staining (Formalin-fixed paraffin-embedded sections) of human cerebral cortex with C1QTNF4 polyclonal antibody (Cat # PAB31238) shows strong cytoplasmic positivity in glial cells.

## Gene Info — C1QTNF4

**Entrez GeneID**[114900](#)**Protein Accession#**[Q9BXJ3](#)**Gene Name**

C1QTNF4

**Gene Alias**

CTRP4, ZACRP4

**Gene Description**

C1q and tumor necrosis factor related protein 4

**Gene Ontology**[Hyperlink](#)**Other Designations**

complement-c1q tumor necrosis factor-related protein 4