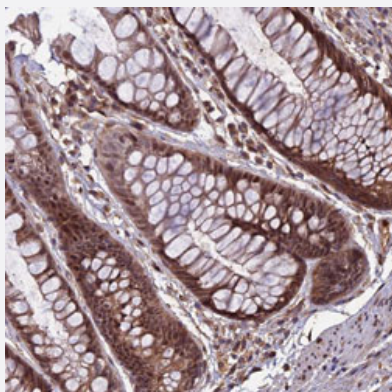


SPG11 polyclonal antibody

Catalog # PAB31236 Size 100 uL

Applications



Immunohistochemistry (Formalin/PFA-fixed paraffin-embedded sections)

Immunohistochemical staining (Formalin-fixed paraffin-embedded sections) of human rectum with SPG11 polyclonal antibody (Cat # PAB31236) shows moderate cytoplasmic and nuclear positivity in glandular cells.

Specification

Product Description	Rabbit polyclonal antibody raised against partial recombinant human SPG11.
Immunogen	Recombinant protein corresponding to human SPG11.
Sequence	RLHNMKLSISYLRECAKANDWLQFIIHSQLHNYHPAEVKSLIQYFSPVIQDHLRLAFENLPSVPTSK MDSQVCNKCPQELQGSQEMTDLFEILLQCS
Host	Rabbit
Reactivity	Human
Form	Liquid
Purification	Antigen affinity purification
Isotype	IgG
Recommend Usage	Immunohistochemistry (Formalin/PFA-fixed paraffin-embedded sections) (1:50-1:200) The optimal working dilution should be determined by the end user.
Storage Buffer	In PBS, pH 7.2 (40% glycerol, 0.02% sodium azide).

Storage Instruction

Store at 4°C for short term storage. For long term storage store at -20°C.
Aliquot to avoid repeated freezing and thawing.

Note

This product contains sodium azide: a POISONOUS AND HAZARDOUS SUBSTANCE which should be handled by trained staff only.

Applications

- Immunohistochemistry (Formalin/PFA-fixed paraffin-embedded sections)

Immunohistochemical staining (Formalin-fixed paraffin-embedded sections) of human rectum with SPG11 polyclonal antibody (Cat # PAB31236) shows moderate cytoplasmic and nuclear positivity in glandular cells.

Gene Info — SPG11

Entrez GeneID [80208](#)

Protein Accession# [Q96J17](#)

Gene Name SPG11

Gene Alias DKFZp762B1512, FLJ21439, KIAA1840, SPATACSIN

Gene Description spastic paraplegia 11 (autosomal recessive)

Omim ID [604360 610844](#)

Gene Ontology [Hyperlink](#)

Gene Summary The protein encoded by this gene is a potential transmembrane protein that is phosphorylated upon DNA damage. Defects in this gene are a cause of spastic paraplegia type 11 (SPG11). Multiple transcript variants encoding different isoforms have been found for this gene. [provided by RefSeq]

Other Designations -

Disease

- [Tobacco Use Disorder](#)