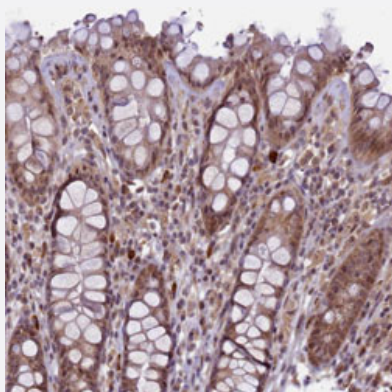


RBBP8 polyclonal antibody

Catalog # PAB31230 Size 100 uL

Applications



Immunohistochemistry (Formalin/PFA-fixed paraffin-embedded sections)

Immunohistochemical staining (Formalin-fixed paraffin-embedded sections) of human rectum with RBBP8 polyclonal antibody (Cat # PAB31230) shows moderate cytoplasmic and nuclear positivity in glandular cells.

Specification

Product Description	Rabbit polyclonal antibody raised against partial recombinant human RBBP8.
Immunogen	Recombinant protein corresponding to human RBBP8.
Sequence	ELECEEDVIPDSPITAFSFGVNLRRKENPHVRYEQTHTKLEHSVCANEMRKVSKSSTHPQHN PNENEILVADTYDQSQSPMAKAHGTSSYTPDKS
Host	Rabbit
Reactivity	Human
Form	Liquid
Purification	Antigen affinity purification
Isotype	IgG
Recommend Usage	Immunohistochemistry (Formalin/PFA-fixed paraffin-embedded sections) (1:200-1:500) The optimal working dilution should be determined by the end user.
Storage Buffer	In PBS, pH 7.2 (40% glycerol, 0.02% sodium azide).

Storage Instruction

Store at 4°C for short term storage. For long term storage store at -20°C.
Aliquot to avoid repeated freezing and thawing.

Note

This product contains sodium azide: a POISONOUS AND HAZARDOUS SUBSTANCE which should be handled by trained staff only.

Applications

- Immunohistochemistry (Formalin/PFA-fixed paraffin-embedded sections)

Immunohistochemical staining (Formalin-fixed paraffin-embedded sections) of human rectum with RBBP8 polyclonal antibody (Cat # PAB31230) shows moderate cytoplasmic and nuclear positivity in glandular cells.

Gene Info — RBBP8

Entrez GeneID[5932](#)**Protein Accession#**[Q99708](#)**Gene Name**

RBBP8

Gene Alias

CTIP, RIM

Gene Description

retinoblastoma binding protein 8

Omim ID[604124](#)**Gene Ontology**[Hyperlink](#)**Gene Summary**

The protein encoded by this gene is a ubiquitously expressed nuclear protein. It is found among several proteins that bind directly to retinoblastoma protein, which regulates cell proliferation. This protein complexes with transcriptional co-repressor CTBP. It is also associated with BRCA1 and is thought to modulate the functions of BRCA1 in transcriptional regulation, DNA repair, and/or cell cycle checkpoint control. It is suggested that this gene may itself be a tumor suppressor acting in the same pathway as BRCA1. Three transcript variants encoding two different isoforms have been found for this gene. More transcript variants exist, but their full-length natures have not been determined. [provided by RefSeq]

Other Designations

CTBP-interacting protein|retinoblastoma-binding protein 8|retinoblastoma-interacting myosin-like

Disease

- [Adenocarcinoma](#)
- [Breast cancer](#)

- [Breast Neoplasms](#)
- [Diabetes Mellitus](#)
- [Genetic Predisposition to Disease](#)
- [Ovarian cancer](#)
- [Ovarian Neoplasms](#)
- [Pancreatic Neoplasms](#)
- [Retinoblastoma](#)