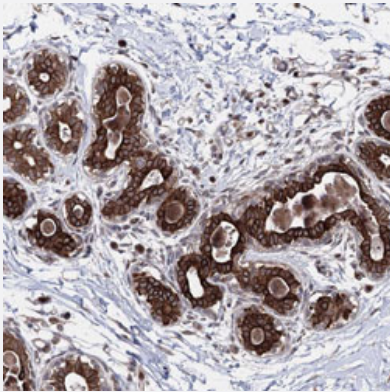


CPNE8 polyclonal antibody

Catalog # PAB31217 Size 100 uL

Applications



Immunohistochemistry (Formalin/PFA-fixed paraffin-embedded sections)

Immunohistochemical staining (Formalin-fixed paraffin-embedded sections) of human breast with CPNE8 polyclonal antibody (Cat # PAB31217) shows strong cytoplasmic and membranous positivity in glandular cells.

Specification

Product Description	Rabbit polyclonal antibody raised against partial recombinant human CPNE8.
Immunogen	Recombinant protein corresponding to human CPNE8.
Sequence	MDSRYNSTAGIGDLNQLSAAIPATRVEVSVSCRNLL
Host	Rabbit
Reactivity	Human
Form	Liquid
Purification	Antigen affinity purification
Isotype	IgG
Recommend Usage	Immunohistochemistry (Formalin/PFA-fixed paraffin-embedded sections) (1:20-1:50) The optimal working dilution should be determined by the end user.
Storage Buffer	In PBS, pH 7.2 (40% glycerol, 0.02% sodium azide).

Storage Instruction

Store at 4°C for short term storage. For long term storage store at -20°C.
Aliquot to avoid repeated freezing and thawing.

Note

This product contains sodium azide: a POISONOUS AND HAZARDOUS SUBSTANCE which should be handled by trained staff only.

Applications

- Immunohistochemistry (Formalin/PFA-fixed paraffin-embedded sections)

Immunohistochemical staining (Formalin-fixed paraffin-embedded sections) of human breast with CPNE8 polyclonal antibody (Cat # PAB31217) shows strong cytoplasmic and membranous positivity in glandular cells.

Gene Info — CPNE8

Entrez GeneID[144402](#)**Protein Accession#**[Q86YQ8](#)**Gene Name**

CPNE8

Gene Alias

MGC129645, MGC129646

Gene Description

copine VIII

Gene Ontology[Hyperlink](#)**Gene Summary**

Calcium-dependent membrane-binding proteins may regulate molecular events at the interface of the cell membrane and cytoplasm. This gene is one of several genes that encode a calcium-dependent protein containing two N-terminal type II C2 domains and an integrin A domain-like sequence in the C-terminus. [provided by RefSeq]

Other Designations

-