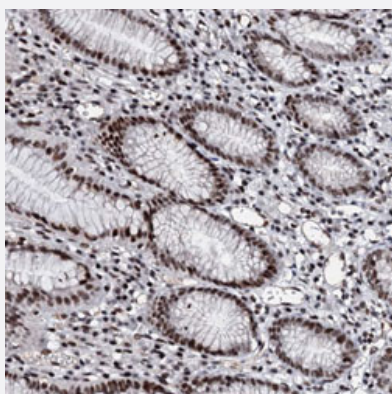


LOC751071 polyclonal antibody

Catalog # PAB31212 Size 100 uL

Applications



Immunohistochemistry (Formalin/PFA-fixed paraffin-embedded sections)

Immunohistochemical staining (Formalin-fixed paraffin-embedded sections) of human stomach with LOC751071 polyclonal antibody (Cat # PAB31212) shows strong nuclear positivity in glandular cells.

Specification

Product Description	Rabbit polyclonal antibody raised against partial recombinant human LOC751071.
Immunogen	Recombinant protein corresponding to human LOC751071.
Sequence	GTWDAVARGGLPRAYQLLSECLRVLPQGTLIQFSDDEPDVRLPCLEQGSYGWTVTVQELGPFR GITYFAY
Host	Rabbit
Reactivity	Human
Form	Liquid
Purification	Antigen affinity purification
Isotype	IgG
Recommend Usage	Immunohistochemistry (Formalin/PFA-fixed paraffin-embedded sections) (1:50-1:200) The optimal working dilution should be determined by the end user.
Storage Buffer	In PBS, pH 7.2 (40% glycerol, 0.02% sodium azide).

Storage Instruction

Store at 4°C for short term storage. For long term storage store at -20°C.
Aliquot to avoid repeated freezing and thawing.

Note

This product contains sodium azide: a POISONOUS AND HAZARDOUS SUBSTANCE which should be handled by trained staff only.

Applications

- Immunohistochemistry (Formalin/PFA-fixed paraffin-embedded sections)

Immunohistochemical staining (Formalin-fixed paraffin-embedded sections) of human stomach with LOC751071 polyclonal antibody (Cat # PAB31212) shows strong nuclear positivity in glandular cells.

Gene Info — LOC751071

Entrez GeneID[751071](#)**Protein Accession#**[A8MUP2](#)**Gene Name**

LOC751071

Gene Alias

-

Gene Description

methyltransferase LOC751071, mitochondrial-like

Gene Ontology[Hyperlink](#)**Gene Summary**

Putative methyltransferase LOC751071

Other Designations

Putative methyltransferase LOC751071, mitochondrial|hypothetical protein LOC751071