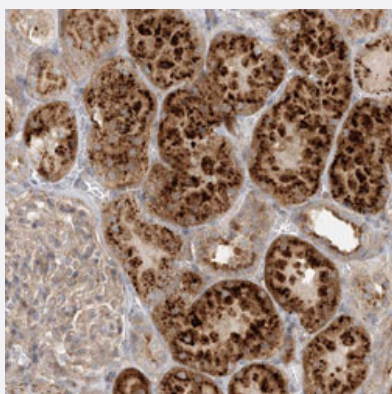


SPPL2A polyclonal antibody

Catalog # PAB31196 Size 100 uL

Applications



Immunohistochemistry (Formalin/PFA-fixed paraffin-embedded sections)

Immunohistochemical staining (Formalin-fixed paraffin-embedded sections) of human kidney with SPPL2A polyclonal antibody (Cat # PAB31196) shows strong granular cytoplasmic positivity in cells of tubules.

Specification

Product Description	Rabbit polyclonal antibody raised against partial recombinant human SPPL2A.
Immunogen	Recombinant protein corresponding to human SPPL2A.
Sequence	HASGNGTTKDYCMLYNPYWTALPSTLENATSISLMNLTSTPLCNLSDIPPVGKSKAVVVPWGSGHFLE
Host	Rabbit
Reactivity	Human
Form	Liquid
Purification	Antigen affinity purification
Isotype	IgG
Recommend Usage	Immunohistochemistry (Formalin/PFA-fixed paraffin-embedded sections) (1:20-1:50) The optimal working dilution should be determined by the end user.
Storage Buffer	In PBS, pH 7.2 (40% glycerol, 0.02% sodium azide).

Storage Instruction

Store at 4°C for short term storage. For long term storage store at -20°C.
Aliquot to avoid repeated freezing and thawing.

Note

This product contains sodium azide: a POISONOUS AND HAZARDOUS SUBSTANCE which should be handled by trained staff only.

Applications

- Immunohistochemistry (Formalin/PFA-fixed paraffin-embedded sections)

Immunohistochemical staining (Formalin-fixed paraffin-embedded sections) of human kidney with SPPL2A polyclonal antibody (Cat # PAB31196) shows strong granular cytoplasmic positivity in cells of tubules.

Gene Info — SPPL2A

Entrez GeneID[84888](#)**Protein Accession#**[Q8TCT8](#)**Gene Name**

SPPL2A

Gene Alias

IMP3, PSL2

Gene Description

signal peptide peptidase-like 2A

Omim ID[608238](#)**Gene Ontology**[Hyperlink](#)**Gene Summary**

This gene is a member of the signal peptide peptidase-like protease (SPPL) family and encodes an endosomal membrane protein with a protease associated (PA) domain. This protein plays a role in innate and adaptive immunity. A pseudogene of this gene also lies on chromosome 15. [provided by RefSeq]

Other Designations

intramembrane cleaving protease|intramembrane protease 3|presenilin-like protein 2