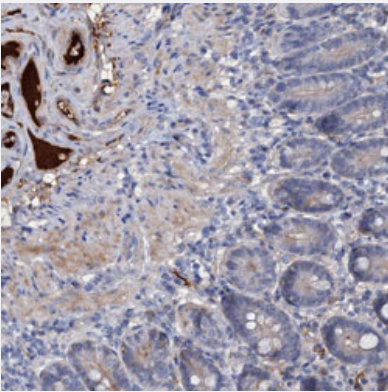


# CHRD polyclonal antibody

Catalog # PAB31194      Size 100 uL

## Applications



### Immunohistochemistry (Formalin/PFA-fixed paraffin-embedded sections)

Immunohistochemical staining (Formalin-fixed paraffin-embedded sections) of human duodenum with CHRD polyclonal antibody (Cat # PAB31194) shows strong plasma positivity.

## Specification

<b>Product Description</b>	Rabbit polyclonal antibody raised against partial recombinant human CHRD.
<b>Immunogen</b>	Recombinant protein corresponding to human CHRD.
<b>Sequence</b>	PNTCFFEGQQRPHGARWAPNYDPLCSLCTCQRRTVICDPVVCPPPPSCPHPVQAPDQCCPVCP EKQDVRDLPLGLPRSRDPGEGCYFDGDRSW
<b>Host</b>	Rabbit
<b>Reactivity</b>	Human
<b>Form</b>	Liquid
<b>Purification</b>	Antigen affinity purification
<b>Isotype</b>	IgG
<b>Recommend Usage</b>	Immunohistochemistry (Formalin/PFA-fixed paraffin-embedded sections) (1:20-1:50) The optimal working dilution should be determined by the end user.
<b>Storage Buffer</b>	In PBS, pH 7.2 (40% glycerol, 0.02% sodium azide).

**Storage Instruction**

Store at 4°C for short term storage. For long term storage store at -20°C.  
Aliquot to avoid repeated freezing and thawing.

**Note**

This product contains sodium azide: a POISONOUS AND HAZARDOUS SUBSTANCE which should be handled by trained staff only.

## Applications

- Immunohistochemistry (Formalin/PFA-fixed paraffin-embedded sections)

Immunohistochemical staining (Formalin-fixed paraffin-embedded sections) of human duodenum with CHRDL polyclonal antibody (Cat # PAB31194) shows strong plasma positivity.

## Gene Info — CHRDL

**Entrez GeneID**[8646](#)**Protein Accession#**[Q9H2X0](#)**Gene Name**

CHRD

**Gene Alias**

MGC133038

**Gene Description**

chordin

**Omim ID**[603475](#)**Gene Ontology**[Hyperlink](#)**Gene Summary**

This gene encodes a secreted protein that dorsalizes early vertebrate embryonic tissues by binding to ventralizing TGF-beta-like bone morphogenetic proteins and sequestering them in latent complexes. The encoded protein may also have roles in organogenesis and during adulthood. Multiple transcript variants encoding distinct isoforms have been identified for this gene. Other alternative splice variants have been described but their full length sequence has not been determined. [provided by RefSeq]

**Other Designations**

OTTHUMP00000180571

## Pathway

- [TGF-beta signaling pathway](#)

## Disease

- [Cardiovascular Diseases](#)
- [Diabetes Mellitus](#)
- [Edema](#)
- [Kidney Failure](#)