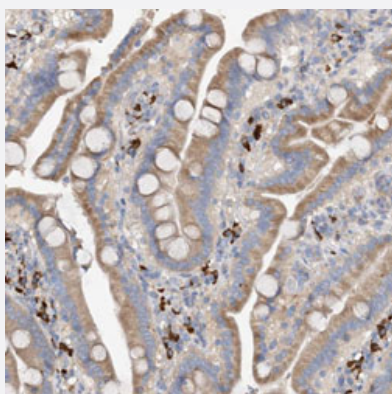


SLC5A11 polyclonal antibody

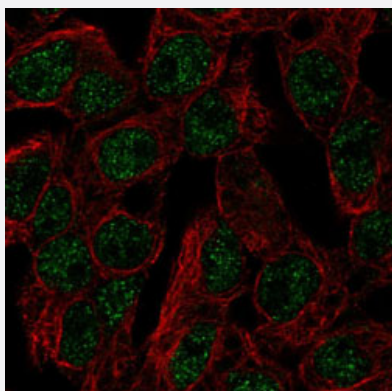
Catalog # PAB31190 Size 100 uL

Applications



Immunohistochemistry (Formalin/PFA-fixed paraffin-embedded sections)

Immunohistochemical staining (Formalin-fixed paraffin-embedded sections) of human duodenum with SLC5A11 polyclonal antibody (Cat # PAB31190) shows moderate cytoplasmic positivity in glandular cells.



Immunofluorescence

Immunofluorescent staining of HepG2 with SLC5A11 polyclonal antibody (Cat # PAB31190) (Green) shows localization to nucleoplasm.

Specification

| | |
|---------------------|---|
| Product Description | Rabbit polyclonal antibody raised against partial recombinant human SLC5A11. |
| Immunogen | Recombinant protein corresponding to human SLC5A11. |
| Sequence | EPPSKEMVSHLTWFRHDPVVQKEQAPPAAPLSLTLSQNGMPEASSSSSVQFEMVQENTSKTH SCDMTPKQSKVVKAILWLCGIQEK GK |
| Host | Rabbit |
| Reactivity | Human |

| | |
|---------------------|---|
| Form | Liquid |
| Purification | Antigen affinity purification |
| Isotype | IgG |
| Recommend Usage | Immunofluorescence (1-4 ug/mL) Immunohistochemistry (Formalin/PFA-fixed paraffin-embedded sections) (1:500-1:1000) The optimal working dilution should be determined by the end user. |
| Storage Buffer | In PBS, pH 7.2 (40% glycerol, 0.02% sodium azide). |
| Storage Instruction | Store at 4°C for short term storage. For long term storage store at -20°C. Aliquot to avoid repeated freezing and thawing. |
| Note | This product contains sodium azide: a POISONOUS AND HAZARDOUS SUBSTANCE which should be handled by trained staff only. |

Applications

- Immunohistochemistry (Formalin/PFA-fixed paraffin-embedded sections)

Immunohistochemical staining (Formalin-fixed paraffin-embedded sections) of human duodenum with SLC5A11 polyclonal antibody (Cat # PAB31190) shows moderate cytoplasmic positivity in glandular cells.

- Immunofluorescence

Immunofluorescent staining of HepG2 with SLC5A11 polyclonal antibody (Cat # PAB31190) (Green) shows localization to nucleoplasm.

Gene Info — SLC5A11

| | |
|--------------------|---|
| Entrez GeneID | 115584 |
| Protein Accession# | Q8WWX8 |
| Gene Name | SLC5A11 |
| Gene Alias | KST1, RKST1, SGLT6, SMIT2 |
| Gene Description | solute carrier family 5 (sodium/glucose cotransporter), member 11 |
| Omim ID | 610238 |
| Gene Ontology | Hyperlink |

Gene Summary

Cotransporters, such as SLC5A11, represent a major class of proteins that make use of ion gradients to drive active transport for the cellular accumulation of nutrients, neurotransmitters, osmolytes, and ions Roll et al. (2002) [PubMed 12039040].[supplied by OMIM]

Other Designations

homolog of rabbit KST1|putative sodium-coupled cotransporter RKST1|sodium/myo-inositol cotransporter 2

Disease

- [Lupus Erythematosus](#)
- [Tobacco Use Disorder](#)