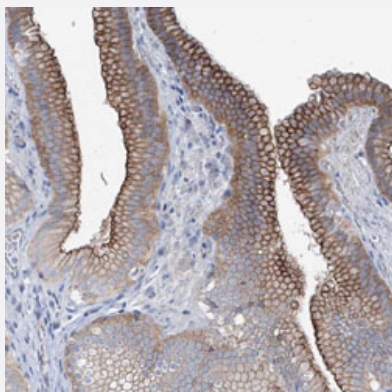


MAGI1 polyclonal antibody

Catalog # PAB31177 Size 100 uL

Applications



Immunohistochemistry (Formalin/PFA-fixed paraffin-embedded sections)

Immunohistochemical staining (Formalin-fixed paraffin-embedded sections) of human gall bladder with MAGI1 polyclonal antibody (Cat # PAB31177) shows moderate membrane and cytoplasmic positivity in glandular cells.

Specification

Product Description	Rabbit polyclonal antibody raised against partial recombinant human MAGI1.
Immunogen	Recombinant protein corresponding to human MAGI1.
Sequence	PSQPVSGKVITTDALHSLQSGSKQSTPKRTKSYNDMQNAGVHAENEEEDDVPEMNSSFTADSG EQEEHTLQETALPPVNSSI AAPITDPSQKFPQY
Host	Rabbit
Reactivity	Human
Form	Liquid
Purification	Antigen affinity purification
Isotype	IgG
Recommend Usage	Immunohistochemistry (Formalin/PFA-fixed paraffin-embedded sections) (1:20-1:50) The optimal working dilution should be determined by the end user.
Storage Buffer	In PBS, pH 7.2 (40% glycerol, 0.02% sodium azide).

Storage Instruction

Store at 4°C for short term storage. For long term storage store at -20°C.
Aliquot to avoid repeated freezing and thawing.

Note

This product contains sodium azide: a POISONOUS AND HAZARDOUS SUBSTANCE which should be handled by trained staff only.

Applications

- Immunohistochemistry (Formalin/PFA-fixed paraffin-embedded sections)

Immunohistochemical staining (Formalin-fixed paraffin-embedded sections) of human gall bladder with MAGI1 polyclonal antibody (Cat # PAB31177) shows moderate membrane and cytoplasmic positivity in glandular cells.

Gene Info — MAGI1

Entrez GeneID[9223](#)**Protein Accession#**[Q96QZ7](#)**Gene Name**

MAGI1

Gene Alias

AIP3, BAIAP1, BAP1, MAGI-1, TNRC19, WWP3

Gene Description

membrane associated guanylate kinase, WW and PDZ domain containing 1

Omim ID[602625](#)**Gene Ontology**[Hyperlink](#)**Gene Summary**

The protein encoded by this gene is a member of the membrane-associated guanylate kinase homologue (MAGUK) family. MAGUK proteins participate in the assembly of multiprotein complexes on the inner surface of the plasma membrane at regions of cell-cell contact. The product of this gene may play a role as scaffolding protein at cell-cell junctions. Alternatively spliced transcript variants encoding different isoforms have been identified. [provided by RefSeq]

Other Designations

BAI1-associated protein 1|WW domain-containing protein 3|atrophin-1 interacting protein 3|membrane associated guanylate kinase inverted-1|trinucleotide repeat-containing gene 19

Pathway

- [Tight junction](#)

Disease

- [Genetic Predisposition to Disease](#)
- [Tobacco Use Disorder](#)