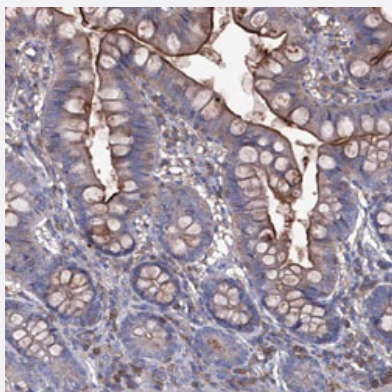


# EPHA8 polyclonal antibody

Catalog # PAB31169      Size 100 uL

## Applications



### Immunohistochemistry (Formalin/PFA-fixed paraffin-embedded sections)

Immunohistochemical staining (Formalin-fixed paraffin-embedded sections) of human small intestine with EPHA8 polyclonal antibody (Cat # PAB31169) shows strong membranous positivity in glandular cells.

## Specification

Product Description	Rabbit polyclonal antibody raised against partial recombinant human EPHA8.
Immunogen	Recombinant protein corresponding to human EPHA8.
Sequence	KRHCGYSKAFQDSDEEKMHYQNGQAPPPVFLPLHHPGKLPEPQFYAQPHTYEELGRAGRSFT REIEASRIHIEKIIIGSGDSG
Host	Rabbit
Reactivity	Human
Form	Liquid
Purification	Antigen affinity purification
Isotype	IgG
Recommend Usage	Immunohistochemistry (Formalin/PFA-fixed paraffin-embedded sections) (1:20-1:50) The optimal working dilution should be determined by the end user.
Storage Buffer	In PBS, pH 7.2 (40% glycerol, 0.02% sodium azide).

**Storage Instruction**

Store at 4°C for short term storage. For long term storage store at -20°C.  
Aliquot to avoid repeated freezing and thawing.

**Note**

This product contains sodium azide: a POISONOUS AND HAZARDOUS SUBSTANCE which should be handled by trained staff only.

## Applications

- Immunohistochemistry (Formalin/PFA-fixed paraffin-embedded sections)

Immunohistochemical staining (Formalin-fixed paraffin-embedded sections) of human small intestine with EPHA8 polyclonal antibody (Cat # PAB31169) shows strong membranous positivity in glandular cells.

## Gene Info — EPHA8

**Entrez GeneID**[2046](#)**Protein Accession#**[P29322](#)**Gene Name**

EPHA8

**Gene Alias**

EEK, HEK3, KIAA1459

**Gene Description**

EPH receptor A8

**Omim ID**[176945](#)**Gene Ontology**[Hyperlink](#)**Gene Summary**

This gene encodes a member of the ephrin receptor subfamily of the protein-tyrosine kinase family. EPH and EPH-related receptors have been implicated in mediating developmental events, particularly in the nervous system. Receptors in the EPH subfamily typically have a single kinase domain and an extracellular region containing a Cys-rich domain and 2 fibronectin type III repeats. The ephrin receptors are divided into 2 groups based on the similarity of their extracellular domain sequences and their affinities for binding ephrin-A and ephrin-B ligands. The protein encoded by this gene functions as a receptor for ephrin A2, A3 and A5 and plays a role in short-range contact-mediated axonal guidance during development of the mammalian nervous system. [provided by RefSeq]

**Other Designations**

EPH- and ELK-related tyrosine kinase|OTTHUMP00000002934|OTTHUMP00000002935|ephrin type-A receptor 8|hydroxyaryl-protein kinase|protein-tyrosine kinase|tyrosine-protein kinase receptor|EEK|tyrosylprotein kinase

## Publication Reference

- [EphA8 is a prognostic marker for epithelial ovarian cancer.](#)

Liu X, Xu Y, Jin Q, Wang W, Zhang S, Wang X, Zhang Y, Xu X, Huang J.

Oncotarget 2016 Apr; 7(15):20801.

Application: IHC-Fr, IHC-P, Human, Human epithelial ovarian cancer

## Pathway

- [Axon guidance](#)

## Disease

- [Celiac Disease](#)
- [Genetic Predisposition to Disease](#)