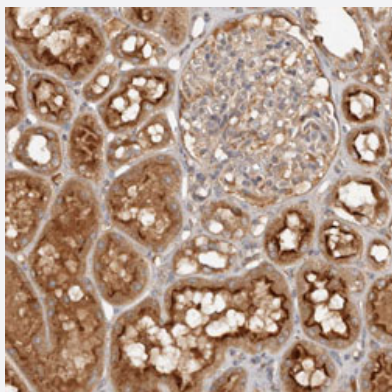


# PKIB polyclonal antibody

Catalog # PAB31144      Size 100 uL

## Applications



### Immunohistochemistry (Formalin/PFA-fixed paraffin-embedded sections)

Immunohistochemical staining (Formalin-fixed paraffin-embedded sections) of human kidney with PKIB polyclonal antibody (Cat # PAB31144) shows strong cytoplasmic and membranous positivity in cells in tubules.

## Specification

<b>Product Description</b>	Rabbit polyclonal antibody raised against partial recombinant human PKIB.
<b>Immunogen</b>	Recombinant protein corresponding to human PKIB.
<b>Sequence</b>	MHILFVDVAMRTDSSKMTDVESGVANFASSARAGRRLPDIQSSAATDGTSDLPLKLEALSVK EDA
<b>Host</b>	Rabbit
<b>Reactivity</b>	Human
<b>Form</b>	Liquid
<b>Purification</b>	Antigen affinity purification
<b>Isotype</b>	IgG
<b>Recommend Usage</b>	Immunohistochemistry (Formalin/PFA-fixed paraffin-embedded sections) (1:20-1:50) The optimal working dilution should be determined by the end user.
<b>Storage Buffer</b>	In PBS, pH 7.2 (40% glycerol, 0.02% sodium azide).

**Storage Instruction**

Store at 4°C for short term storage. For long term storage store at -20°C.  
Aliquot to avoid repeated freezing and thawing.

**Note**

This product contains sodium azide: a POISONOUS AND HAZARDOUS SUBSTANCE which should be handled by trained staff only.

## Applications

- Immunohistochemistry (Formalin/PFA-fixed paraffin-embedded sections)

Immunohistochemical staining (Formalin-fixed paraffin-embedded sections) of human kidney with PKIB polyclonal antibody (Cat # PAB31144) shows strong cytoplasmic and membranous positivity in cells in tubules.

## Gene Info — PKIB

**Entrez GeneID**[5570](#)**Protein Accession#**[Q9C010](#)**Gene Name**

PKIB

**Gene Alias**

FLJ23817, PRKACN2

**Gene Description**

protein kinase (cAMP-dependent, catalytic) inhibitor beta

**Omim ID**[606914](#)**Gene Ontology**[Hyperlink](#)**Gene Summary**

The protein encoded by this gene is a member of the cAMP-dependent protein kinase inhibitor family. Studies of a similar protein in rat suggest that this protein may interact with the catalytic subunit of cAMP-dependent protein kinase and act as a competitive inhibitor. At least three alternatively spliced transcript variants encoding the same protein have been reported. [provided by RefSeq]

**Other Designations**

OTTHUMP00000017114|OTTHUMP00000017116|OTTHUMP00000017117|PKI-beta|cAMP-dependent protein kinase inhibitor 2|cAMP-dependent protein kinase inhibitor beta