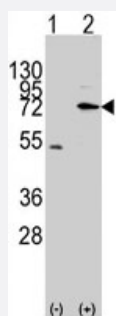


# MIPEP polyclonal antibody

Catalog # PAB3114

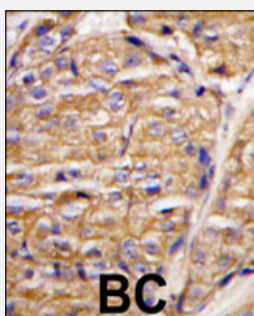
Size 400 uL

## Applications



### Western Blot (Transfected lysate)

Western blot analysis of MIPEP (arrow) using rabbit MIPEP polyclonal antibody (Cat # PAB3114). 293 cell lysates (2 ug/lane) either nontransfected (Lane 1) or transiently transfected with the MIPEP gene (Lane 2) (Origene Technologies).



### Immunohistochemistry (Formalin/PFA-fixed paraffin-embedded sections)

Formalin-fixed and paraffin-embedded human breast carcinoma tissue reacted with MIPEP polyclonal antibody (Cat # PAB3114), which was peroxidase-conjugated to the secondary antibody, followed by DAB staining. This data demonstrates the use of this antibody for immunohistochemistry; clinical relevance has not been evaluated.

## Specification

Product Description	Rabbit polyclonal antibody raised against synthetic peptide of MIPEP.
Immunogen	A synthetic peptide (conjugated with KLH) corresponding to N-terminus of human MIPEP.
Host	Rabbit
Reactivity	Human
Form	Liquid
Purification	Protein A purification

<b>Recommend Usage</b>	Western Blot (1:1000) Immunohistochemistry (1:10-50) The optimal working dilution should be determined by the end user.
<b>Storage Buffer</b>	In PBS (0.09% sodium azide)
<b>Storage Instruction</b>	Store at 4°C. For long term storage store at -20°C. Aliquot to avoid repeated freezing and thawing.
<b>Note</b>	This product contains sodium azide: a POISONOUS AND HAZARDOUS SUBSTANCE which should be handled by trained staff only.

## Applications

- Western Blot (Transfected lysate)

Western blot analysis of MIPEP (arrow) using rabbit MIPEP polyclonal antibody (Cat # PAB3114). 293 cell lysates (2 ug/lane) either nontransfected (Lane 1) or transiently transfected with the MIPEP gene (Lane 2) (Origene Technologies).

- Immunohistochemistry (Formalin/PFA-fixed paraffin-embedded sections)

Formalin-fixed and paraffin-embedded human breast carcinoma tissue reacted with MIPEP polyclonal antibody (Cat # PAB3114), which was peroxidase-conjugated to the secondary antibody, followed by DAB staining. This data demonstrates the use of this antibody for immunohistochemistry; clinical relevance has not been evaluated.

## Gene Info — MIPEP

<b>Entrez GeneID</b>	<a href="#">4285</a>
<b>Protein Accession#</b>	<a href="#">NP_005923;Q99797</a>
<b>Gene Name</b>	MIPEP
<b>Gene Alias</b>	HMIP, MIP
<b>Gene Description</b>	mitochondrial intermediate peptidase
<b>Omim ID</b>	<a href="#">602241</a>
<b>Gene Ontology</b>	<a href="#">Hyperlink</a>
<b>Gene Summary</b>	The product of this gene performs the final step in processing a specific class of nuclear-encoded proteins targeted to the mitochondrial matrix or inner membrane. This protein is primarily involved in the maturation of oxidative phosphorylation (OXPHOS)-related proteins. This gene may contribute to the functional effects of frataxin deficiency and the clinical manifestations of Friedreich ataxia. [provided by RefSeq]
<b>Other Designations</b>	OTTHUMP00000018121 OTTHUMP00000042292

## Publication Reference

- [Cloning, expression, and chromosomal assignment of the human mitochondrial intermediate peptidase gene \(MIPEP\).](#)

Chew A, Buck EA, Peretz S, Sirugo G, Rinaldo P, Isaya G.

Genomics 1997 Mar; 40(3):493.