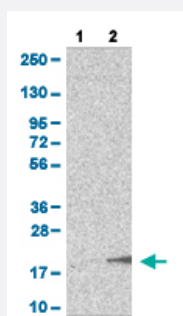


GNRH2 polyclonal antibody

Catalog # PAB31119

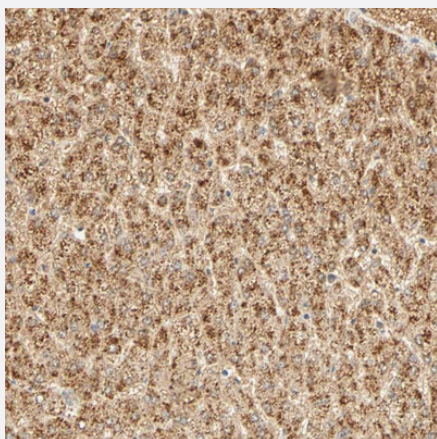
Size 100 uL

Applications



Western Blot (Transfected lysate)

Western Blot analysis of (1) Negative control (vector only transfected HEK293T lysate), and (2) Over-expression lysate (Co-expressed with a C-terminal myc-DDK tag (~3.1 kDa) in mammalian HEK293T cells).



Immunohistochemistry (Formalin/PFA-fixed paraffin-embedded sections)

Immunohistochemical staining (Formalin-fixed paraffin-embedded sections) of human liver shows cytoplasmic positivity in hepatocytes.

Specification

| | |
|---------------------|--|
| Product Description | Rabbit polyclonal antibody raised against partial recombinant human GNRH2. |
| Immunogen | Recombinant protein corresponding to human GNRH2. |
| Sequence | HWSHGWYPGGKRALSSAQDPQNALRPPAGSPVQTAHGLPSDALAPLDDSMPWEGRTTAQWS LHRKRHLARTLLTAAREPR |
| Host | Rabbit |
| Reactivity | Human |

| | |
|---------------------|--|
| Form | Liquid |
| Purification | Antigen affinity purification |
| Isotype | IgG |
| Recommend Usage | Immunohistochemistry (Formalin/PFA-fixed paraffin-embedded sections) (1:20-1:50) Western Blot (1:100-1:250) The optimal working dilution should be determined by the end user. |
| Storage Buffer | In PBS, pH 7.2 (40% glycerol, 0.02% sodium azide). |
| Storage Instruction | Store at 4°C for short term storage. For long term storage store at -20°C. Aliquot to avoid repeated freezing and thawing. |
| Note | This product contains sodium azide: a POISONOUS AND HAZARDOUS SUBSTANCE which should be handled by trained staff only. |

Applications

- Western Blot (Transfected lysate)

Western Blot analysis of (1) Negative control (vector only transfected HEK293T lysate), and (2) Over-expression lysate (Co-expressed with a C-terminal myc-DDK tag (~3.1 kDa) in mammalian HEK293T cells).

- Immunohistochemistry (Formalin/PFA-fixed paraffin-embedded sections)

Immunohistochemical staining (Formalin-fixed paraffin-embedded sections) of human liver shows cytoplasmic positivity in hepatocytes.

Gene Info — GNRH2

| | |
|--------------------|----------------------------------|
| Entrez GeneID | 2797 |
| Protein Accession# | Q43555 |
| Gene Name | GNRH2 |
| Gene Alias | GnRH-II, LH-RHII |
| Gene Description | gonadotropin-releasing hormone 2 |
| Omim ID | 602352 |
| Gene Ontology | Hyperlink |

Gene Summary

The protein encoded by this gene is a preproprotein that is cleaved to form a secreted 10 aa peptide hormone. The secreted decapeptide regulates reproduction in females by stimulating the secretion of both luteinizing- and follicle-stimulating hormones. Three transcript variants that encode unique proproteins but the same peptide hormone have been found for this gene. [provided by RefSeq]

Other Designations

OTTHUMP00000030075|OTTHUMP00000030076|OTTHUMP00000030077|OTTHUMP00000030078||luliberin II|luteinizing hormone-releasing hormone II|progonadoliberin II

Pathway

- [GnRH signaling pathway](#)
- [Neuroactive ligand-receptor interaction](#)

Disease

- [Genetic Predisposition to Disease](#)
- [Mental Disorders](#)
- [Neoplasms](#)
- [Ovarian cancer](#)
- [Ovarian Neoplasms](#)
- [Tobacco Use Disorder](#)