

IFITM3 polyclonal antibody

Catalog # PAB31118

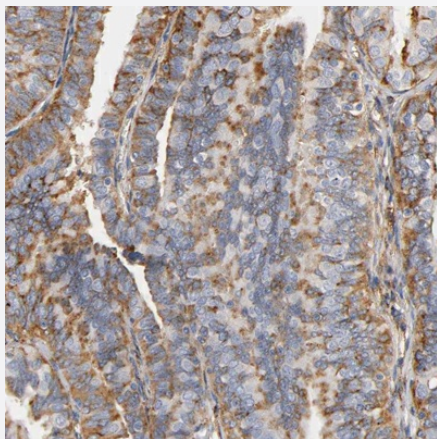
Size 100 uL

Applications



Western Blot (Cell lysate)

Western Blot analysis of human cell line CAPAN-2.



Immunohistochemistry (Formalin/PFA-fixed paraffin-embedded sections)

Immunohistochemical staining (Formalin-fixed paraffin-embedded sections) of human fallopian tube shows moderate cytoplasmic positivity in glandular cells.

Specification

Product Description	Rabbit polyclonal antibody raised against partial recombinant human IFITM3.
Immunogen	Recombinant protein corresponding to amino acids 1-57 of human IFITM3.
Sequence	MNHTVQTFSPVNSGQPPNYEMLKEEHEVAVLGAPHNPAPPTSTVIHIRSETSVDPDH
Host	Rabbit
Reactivity	Human

Form	Liquid
Purification	Antigen affinity purification
Isotype	IgG
Recommend Usage	Immunohistochemistry (Formalin/PFA-fixed paraffin-embedded sections) (1:50-1:200) Western Blot (1:100-1:250) The optimal working dilution should be determined by the end user.
Storage Buffer	In PBS, pH 7.2 (40% glycerol, 0.02% sodium azide).
Storage Instruction	Store at 4°C for short term storage. For long term storage store at -20°C. Aliquot to avoid repeated freezing and thawing.
Note	This product contains sodium azide: a POISONOUS AND HAZARDOUS SUBSTANCE which should be handled by trained staff only.

Applications

- Western Blot (Cell lysate)

Western Blot analysis of human cell line CAPAN-2.

- Immunohistochemistry (Formalin/PFA-fixed paraffin-embedded sections)

Immunohistochemical staining (Formalin-fixed paraffin-embedded sections) of human fallopian tube shows moderate cytoplasmic positivity in glandular cells.

Gene Info — IFITM3

Entrez GeneID	10410
Protein Accession#	Q01628
Gene Name	IFITM3
Gene Alias	1-8U, IP15
Gene Description	interferon induced transmembrane protein 3 (1-8U)
Omim ID	605579
Gene Ontology	Hyperlink
Other Designations	interferon-induced transmembrane protein 3 (1-8U) interferon-inducible

Disease

- [Colitis](#)
- [Genetic Predisposition to Disease](#)