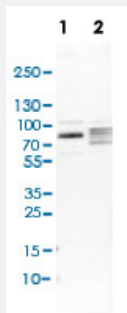


# EXDL2 polyclonal antibody

Catalog # PAB31086

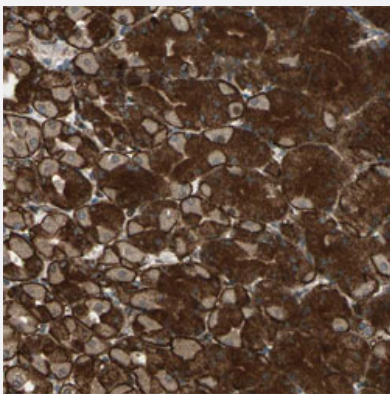
Size 100 uL

## Applications



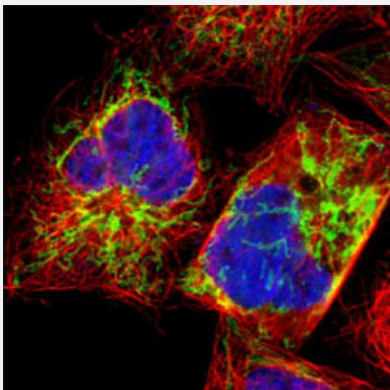
### Western Blot (Cell lysate)

Western Blot (Cell lysate) analysis of (1) NIH-3T3 cell lysate (Mouse embryonic fibroblast cells) and (2) NBT-II cell lysate (Rat Wistar bladder tumour cells).



### Immunohistochemistry (Formalin/PFA-fixed paraffin-embedded sections)

Immunohistochemical staining of human stomach shows strong cytoplasmic and membranous positivity in glandular cells.



### Immunofluorescence

Immunofluorescent staining of A-431 cell line with antibody shows positivity in mitochondria (green).

## Specification

Product Description	Rabbit polyclonal antibody raised against partial recombinant human EXDL2.
Immunogen	Recombinant protein corresponding to human EXDL2.
Sequence	TSCHAI SNYYDNHLKQQQLAKEFQAPIGSEEGRLLED PERRQVRSGARALLNAESLPTQRKEELL QALREFYNTDVVTEEMLQEAAASLETRISNENYVPHGLKV VQCH
Host	Rabbit
Reactivity	Human, Mouse
Form	Liquid
Purification	Antigen affinity purification
Isotype	IgG
Recommend Usage	Immunohistochemistry (Formalin/PFA-fixed paraffin-embedded sections) (1:200-500) Western Blot (1:100-250) Immunofluorescence (1-4 ug/mL) The optimal working dilution should be determined by the end user.
Storage Buffer	In PBS, pH 7.2 (40% glycerol, 0.02% sodium azide).
Storage Instruction	Store at 4°C. For long term storage store at -20°C. Aliquot to avoid repeated freezing and thawing.
Note	This product contains sodium azide: a POISONOUS AND HAZARDOUS SUBSTANCE which should be handled by trained staff only.

## Applications

- Western Blot (Cell lysate)

Western Blot (Cell lysate) analysis of (1) NIH-3T3 cell lysate (Mouse embryonic fibroblast cells) and (2) NBT-II cell lysate (Rat Wistar bladder tumour cells).

- Immunohistochemistry (Formalin/PFA-fixed paraffin-embedded sections)

Immunohistochemical staining of human stomach shows strong cytoplasmic and membranous positivity in glandular cells.

- Immunofluorescence

Immunofluorescent staining of A-431 cell line with antibody shows positivity in mitochondria (green).

## Gene Info — EXDL2

Entrez GeneID

[55218](#)

Protein Accession#	<a href="#">Q9NVH0</a>
Gene Name	EXDL2
Gene Alias	C14orf114, DKFZp781A0133, DKFZp781L15100, FLJ10738
Gene Description	exonuclease 3'-5' domain-like 2
Gene Ontology	<a href="#">Hyperlink</a>
Other Designations	-