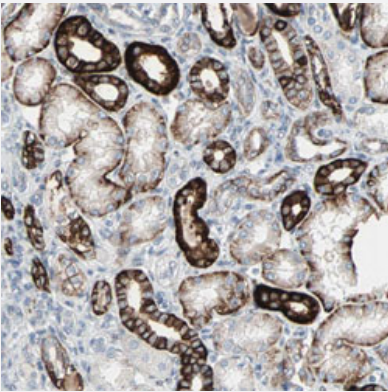


# CAND2 polyclonal antibody

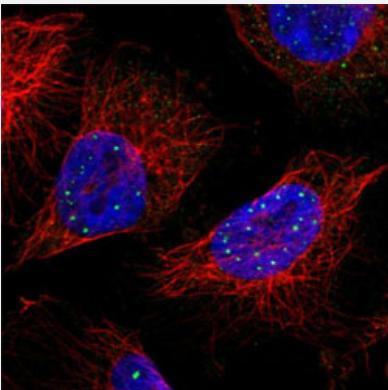
Catalog # PAB31082      Size 100 uL

## Applications



### Immunohistochemistry (Formalin/PFA-fixed paraffin-embedded sections)

Immunohistochemical staining of human kidney shows strong cytoplasmic and membranous positivity in cells in tubules.



### Immunofluorescence

Immunofluorescent staining of U-251MG cell line with antibody shows positivity in nuclear bodies (green).

## Specification

Product Description	Rabbit polyclonal antibody raised against partial recombinant human CAND2.
Immunogen	Recombinant protein corresponding to human CAND2.
Sequence	MPVLVSGIIFSLADRSSSTIRMDALAFLQGLLGTEPAEAFHPLPILLPPVMACVADSFYKIAAEAL VVLQELVRALWPLHRPRMLDPEPYVGEMSAVTLARLRATDLQDEVKERAISCMGH
Host	Rabbit
Reactivity	Human

Form	Liquid
Purification	Antigen affinity purification
Isotype	IgG
Recommend Usage	Immunohistochemistry (Formalin/PFA-fixed paraffin-embedded sections) (1:50-200) Immunofluorescence (1-4 ug/mL) The optimal working dilution should be determined by the end user.
Storage Buffer	In PBS, pH 7.2 (40% glycerol, 0.02% sodium azide).
Storage Instruction	Store at 4°C. For long term storage store at -20°C. Aliquot to avoid repeated freezing and thawing.
Note	This product contains sodium azide: a POISONOUS AND HAZARDOUS SUBSTANCE which should be handled by trained staff only.

## Applications

- Immunohistochemistry (Formalin/PFA-fixed paraffin-embedded sections)

Immunohistochemical staining of human kidney shows strong cytoplasmic and membranous positivity in cells in tubules.

- Immunofluorescence

Immunofluorescent staining of U-251MG cell line with antibody shows positivity in nuclear bodies (green).

## Gene Info — CAND2

Entrez GeneID	<a href="#">23066</a>
Protein Accession#	<a href="#">O75155</a>
Gene Name	CAND2
Gene Alias	KIAA0667, TIP120B, Tp120b
Gene Description	cullin-associated and neddylation-dissociated 2 (putative)
Omim ID	<a href="#">610403</a>
Gene Ontology	<a href="#">Hyperlink</a>
Other Designations	TBP interacting protein TBP-interacting protein

## Disease

- [Clubfoot](#)
- [Genetic Predisposition to Disease](#)