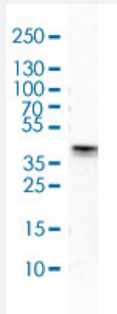


DLX5 polyclonal antibody

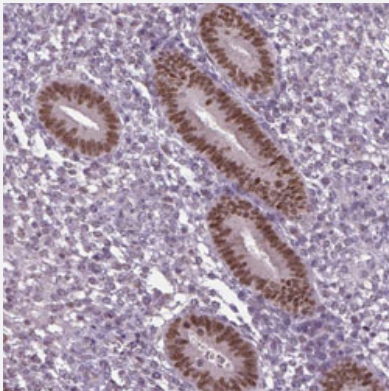
Catalog # PAB31076 Size 100 uL

Applications



Western Blot (Cell lysate)

Western Blot (Cell lysate) analysis of Saos-2 cell lysate.



Immunohistochemistry (Formalin/PFA-fixed paraffin-embedded sections)

Immunohistochemical staining of human uterus shows moderate to strong nuclear positivity in glandular cells.

Specification

Product Description	Rabbit polyclonal antibody raised against partial recombinant human DLX5.
Immunogen	Recombinant protein corresponding to human DLX5.
Sequence	RRVPSIRSGDFQAPFQTSAAMHHPSQESPTLPESATDSDYYSP TGGAPHGYCSPTSASYGKAL NPYQYQYHGVNGSAGSYPAKAYADYSYASSYHQYGGAYNRVPSATNQPEKEVTEPEVRM/VNGK PKKVRKP
Host	Rabbit
Reactivity	Human

Form	Liquid
Purification	Antigen affinity purification
Isotype	IgG
Recommend Usage	Immunohistochemistry (Formalin/PFA-fixed paraffin-embedded sections) (1:500-1000) Western Blot (1:500-1000) The optimal working dilution should be determined by the end user.
Storage Buffer	In PBS, pH 7.2 (40% glycerol, 0.02% sodium azide).
Storage Instruction	Store at 4°C. For long term storage store at -20°C. Aliquot to avoid repeated freezing and thawing.
Note	This product contains sodium azide: a POISONOUS AND HAZARDOUS SUBSTANCE which should be handled by trained staff only.

Applications

- Western Blot (Cell lysate)

Western Blot (Cell lysate) analysis of Saos-2 cell lysate.

- Immunohistochemistry (Formalin/PFA-fixed paraffin-embedded sections)

Immunohistochemical staining of human uterus shows moderate to strong nuclear positivity in glandular cells.

Gene Info — DLX5

Entrez GeneID	1749
Protein Accession#	P56178
Gene Name	DLX5
Gene Alias	-
Gene Description	distal-less homeobox 5
Omim ID	600028
Gene Ontology	Hyperlink

Gene Summary

This gene encodes a member of a homeobox transcription factor gene family similar to the Drosophila distal-less gene. The encoded protein may play a role in bone development and fracture healing. Mutation in this gene, which is located in a tail-to-tail configuration with another member of the family on the long arm of chromosome 7, may be associated with split-hand/split-foot malformation. [provided by RefSeq]

Other Designations

distal-less homeo box 5

Publication Reference

- [Immunofluorescence and fluorescent-protein tagging show high correlation for protein localization in mammalian cells.](#)

Charlotte Stadler, Elton Rexhepaj, Vasanth R Singan, Robert F Murphy, Rainer Pepperkok, Mathias Uhlén, Jeremy C Simpson, Emma Lundberg.

Nature Methods 2013 Apr; 10(4):315.

Disease

- [Cleft Lip](#)
- [Cleft Palate](#)