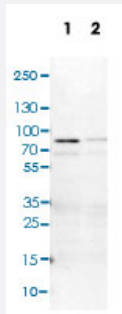


FZD8 polyclonal antibody

Catalog # PAB31068

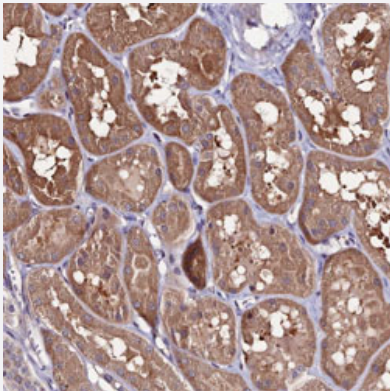
Size 100 uL

Applications



Western Blot (Cell lysate)

Western Blot (Cell lysate) analysis of (1) NIH-3T3 cell lysate (Mouse embryonic fibroblast cells) and (2) NBT-II cell lysate (Rat Wistar bladder tumour cells).



Immunohistochemistry (Formalin/PFA-fixed paraffin-embedded sections)

Immunohistochemical staining of human kidney shows moderate cytoplasmic positivity in tubular cells.

Specification

Product Description	Rabbit polyclonal antibody raised against partial recombinant human FZD8.
Immunogen	Recombinant protein corresponding to human FZD8.
Sequence	GSLYSDVSTGLTWRSGTASSVSYPKQMPLSQV
Host	Rabbit
Reactivity	Human, Mouse, Rat
Form	Liquid

Purification	Antigen affinity purification
Isotype	IgG
Recommend Usage	Immunohistochemistry (Formalin/PFA-fixed paraffin-embedded sections) (1:50-200) Western Blot (1:100-250) The optimal working dilution should be determined by the end user.
Storage Buffer	In PBS, pH 7.2 (40% glycerol, 0.02% sodium azide).
Storage Instruction	Store at 4°C. For long term storage store at -20°C. Aliquot to avoid repeated freezing and thawing.
Note	This product contains sodium azide: a POISONOUS AND HAZARDOUS SUBSTANCE which should be handled by trained staff only.

Applications

- Western Blot (Cell lysate)

Western Blot (Cell lysate) analysis of (1) NIH-3T3 cell lysate (Mouse embryonic fibroblast cells) and (2) NBT-II cell lysate (Rat Wistar bladder tumour cells).

- Immunohistochemistry (Formalin/PFA-fixed paraffin-embedded sections)

Immunohistochemical staining of human kidney shows moderate cytoplasmic positivity in tubular cells.

Gene Info — FZD8

Entrez GeneID	8325
Protein Accession#	Q9H461
Gene Name	FZD8
Gene Alias	FZ-8, hFZ8
Gene Description	frizzled homolog 8 (Drosophila)
Omim ID	606146
Gene Ontology	Hyperlink

Gene Summary

This intronless gene is a member of the frizzled gene family. Members of this family encode seven -transmembrane domain proteins that are receptors for the Wingless type MMTV integration site family of signaling proteins. Most frizzled receptors are coupled to the beta-catenin canonical signaling pathway. This gene is highly expressed in two human cancer cell lines, indicating that it may play a role in several types of cancer. The crystal structure of the extracellular cysteine-rich domain of a similar mouse protein has been determined. [provided by RefSeq]

Other Designations

OTTHUMP00000019454|frizzled 8

Pathway

- [Basal cell carcinoma](#)
- [Colorectal cancer](#)
- [Melanogenesis](#)
- [Pathways in cancer](#)
- [Wnt signaling pathway](#)

Disease

- [Cleft Lip](#)
- [Cleft Palate](#)