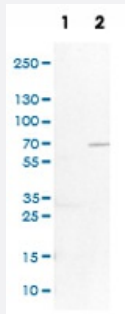


KIF2A polyclonal antibody

Catalog # PAB31050

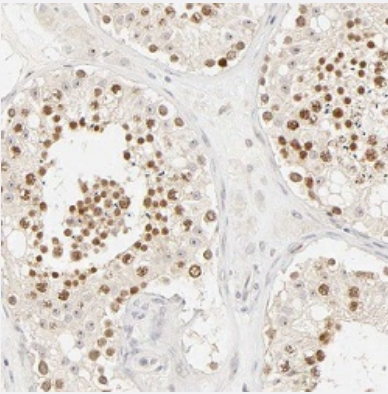
Size 100 uL

Applications



Western Blot (Cell lysate)

Western Blot (Cell lysate) analysis of (1) NIH-3T3 cell lysate (Mouse embryonic fibroblast cells) and (2) NBT-II cell lysate (Rat Wistar bladder tumour cells).



Immunohistochemistry (Formalin/PFA-fixed paraffin-embedded sections)

Immunohistochemical staining (Formalin-fixed paraffin-embedded sections) of human testis shows nuclear positivity in cells of seminiferous ducts.

Specification

Product Description	Rabbit polyclonal antibody raised against partial recombinant human KIF2A.
Immunogen	Recombinant protein corresponding to human KIF2A.
Sequence	DNESVTVEWIENGDTKGKEIDLESIFSLNPDLVPDEEIEPSPETPPPPASSAKVNKIVKNRRTVASIKNDPPSRDNRVVG SARARPSQFPEQSSSAQQNGSVSDISPVQA
Host	Rabbit
Reactivity	Human, Rat

Form	Liquid
Purification	Affinity purification
Isotype	IgG
Recommend Usage	Immunohistochemistry (Formalin/PFA-fixed paraffin-embedded sections) (1:20-50) Western Blot (1:100-250) The optimal working dilution should be determined by the end user.
Storage Buffer	In PBS, pH 7.2 (40% glycerol, 0.02% sodium azide).
Storage Instruction	Store at 4°C. For long term storage store at -20°C. Aliquot to avoid repeated freezing and thawing.
Note	This product contains sodium azide: a POISONOUS AND HAZARDOUS SUBSTANCE which should be handled by trained staff only.

Applications

- Western Blot (Cell lysate)

Western Blot (Cell lysate) analysis of (1) NIH-3T3 cell lysate (Mouse embryonic fibroblast cells) and (2) NBT-II cell lysate (Rat Wistar bladder tumour cells).

- Immunohistochemistry (Formalin/PFA-fixed paraffin-embedded sections)

Immunohistochemical staining (Formalin-fixed paraffin-embedded sections) of human testis shows nuclear positivity in cells of seminiferous ducts.

Gene Info — KIF2A

Entrez GeneID	3796
Protein Accession#	O00139
Gene Name	KIF2A
Gene Alias	HK2, KIF2
Gene Description	kinesin heavy chain member 2A
Omim ID	602591
Gene Ontology	Hyperlink
Gene Summary	Kinesins, such as KIF2, are microtubule-associated motor proteins. For background information on kinesins, see MIM 148760.[supplied by OMIM]

Other Designations

Kinesin, heavy chain, 2|kinesin heavy chain member 2

Disease

- [Schizophrenia](#)
- [Tobacco Use Disorder](#)