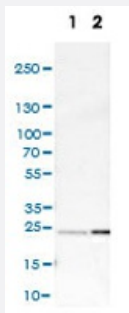


PARK7 polyclonal antibody

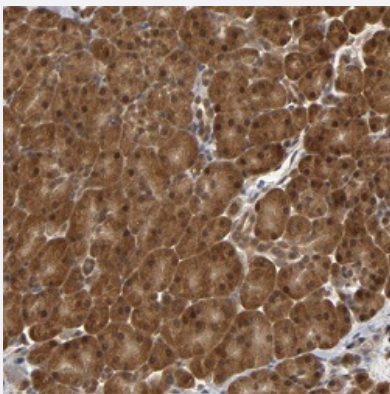
Catalog # PAB31036 Size 100 uL

Applications



Western Blot (Cell lysate)

Western Blot (Cell lysate) analysis of (1) NIH-3T3 cell lysate (Mouse embryonic fibroblast cells) and (2) NBT-II cell lysate (Rat Wistar bladder tumour cells).



Immunohistochemistry (Formalin/PFA-fixed paraffin-embedded sections)

Immunohistochemical staining (Formalin-fixed paraffin-embedded sections) of human pancreas shows cytoplasmic and nuclear positivity in exocrine glandular cells.

Specification

Product Description	Rabbit polyclonal antibody raised against partial recombinant human PARK7.
Immunogen	Recombinant protein corresponding to human PARK7.
Sequence	GKDPVQCSRDVVICPDASLEDKKEGPYDVVVLPGGNLGAQNLSESAAVKEILKEQENRKGLIA AICAGPTALLAHEIGFGSKVTTHPLAKDKMMNGGHYTYSENVEKDGLILTSRGPGTSEFALAVE ALNGKEV
Host	Rabbit
Reactivity	Human, Mouse, Rat

Form	Liquid
Purification	Affinity purification
Isotype	IgG
Recommend Usage	Immunohistochemistry (Formalin/PFA-fixed paraffin-embedded sections) (1:500-1000) Western Blot (1:100-250) The optimal working dilution should be determined by the end user.
Storage Buffer	In PBS, pH 7.2 (40% glycerol, 0.02% sodium azide).
Storage Instruction	Store at 4°C. For long term storage store at -20°C. Aliquot to avoid repeated freezing and thawing.
Note	This product contains sodium azide: a POISONOUS AND HAZARDOUS SUBSTANCE which should be handled by trained staff only.

Applications

- Western Blot (Cell lysate)

Western Blot (Cell lysate) analysis of (1) NIH-3T3 cell lysate (Mouse embryonic fibroblast cells) and (2) NBT-II cell lysate (Rat Wistar bladder tumour cells).

- Immunohistochemistry (Formalin/PFA-fixed paraffin-embedded sections)

Immunohistochemical staining (Formalin-fixed paraffin-embedded sections) of human pancreas shows cytoplasmic and nuclear positivity in exocrine glandular cells.

Gene Info — PARK7

Entrez GeneID	11315
Protein Accession#	Q99497
Gene Name	PARK7
Gene Alias	DJ-1, DJ1, FLJ27376, FLJ34360, FLJ92274
Gene Description	Parkinson disease (autosomal recessive, early onset) 7
Omim ID	602533 606324
Gene Ontology	Hyperlink

Gene Summary

The product of this gene belongs to the peptidase C56 family of proteins. It acts as a positive regulator of androgen receptor-dependent transcription. It may also function as a redox-sensitive chaperone, as a sensor for oxidative stress, and it apparently protects neurons against oxidative stress and cell death. Defects in this gene are the cause of autosomal recessive early-onset Parkinson disease 7. Two transcript variants encoding the same protein have been identified for this gene. [provided by RefSeq]

Other Designations

OTTHUMP00000001348|OTTHUMP00000001349|OTTHUMP00000001350|OTTHUMP00000001351|Parkinson disease protein 7|oncogene DJ1|protein DJ-1

Disease

- [Alzheimer disease](#)
- [Chromosome Disorders](#)
- [Dementia](#)
- [Disease Progression](#)
- [Genetic Predisposition to Disease](#)
- [Lewy Body Disease](#)
- [Parkinson disease](#)
- [Parkinsonian Disorders](#)