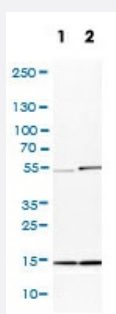


UBE2D2 polyclonal antibody

Catalog # PAB31022

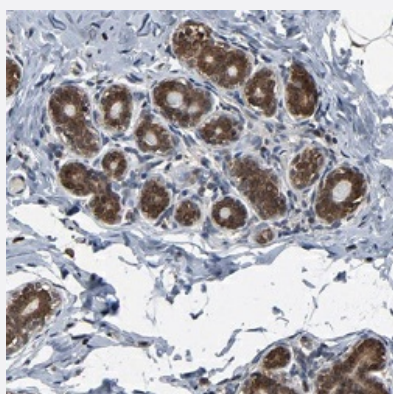
Size 100 uL

Applications



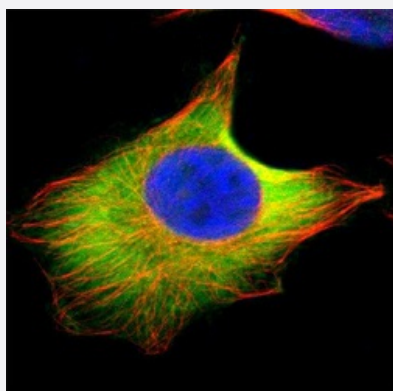
Western Blot (Cell lysate)

Western Blot (Cell lysate) analysis of (1) NIH-3T3 cell lysate (Mouse embryonic fibroblast cells) and (2) NBT-II cell lysate (Rat Wistar bladder tumour cells).



Immunohistochemistry (Formalin/PFA-fixed paraffin-embedded sections)

Immunohistochemical staining (Formalin-fixed paraffin-embedded sections) of human breast shows cytoplasmic and nuclear positivity in glandular cells.



Immunofluorescence

Immunofluorescence staining of U-251MG cell line with antibody shows positivity in plasma membrane and cytosol(green).

Specification

Product Description	Rabbit polyclonal antibody raised against partial recombinant human UBE2D2.
Immunogen	Recombinant protein corresponding to human UBE2D2.
Sequence	LTDLQRDPPAQCSAGPVGDDLFWQATIMGPNDSPYQGGVFFLTIHFPDYPFKPPKVAFTTKIMH PNINSNGSICLDILRS
Host	Rabbit
Reactivity	Human, Mouse, Rat
Form	Liquid
Purification	Affinity purification
Isotype	IgG
Recommend Usage	Immunohistochemistry (Formalin/PFA-fixed paraffin-embedded sections) (1:20-50) Immunofluorescence (0.25-2 ug/mL) Western Blot (1:100-250) The optimal working dilution should be determined by the end user.
Storage Buffer	In PBS, pH 7.2 (40% glycerol, 0.02% sodium azide).
Storage Instruction	Store at 4°C. For long term storage store at -20°C. Aliquot to avoid repeated freezing and thawing.
Note	This product contains sodium azide: a POISONOUS AND HAZARDOUS SUBSTANCE which should be handled by trained staff only.

Applications

- Western Blot (Cell lysate)

Western Blot (Cell lysate) analysis of (1) NIH-3T3 cell lysate (Mouse embryonic fibroblast cells) and (2) NBT-II cell lysate (Rat Wistar bladder tumour cells).

- Immunohistochemistry (Formalin/PFA-fixed paraffin-embedded sections)

Immunohistochemical staining (Formalin-fixed paraffin-embedded sections) of human breast shows cytoplasmic and nuclear positivity in glandular cells.

- Immunofluorescence

Immunofluorescence staining of U-251MG cell line with antibody shows positivity in plasma membrane and cytosol(green).

Gene Info — UBE2D2

Entrez GeneID	7322
Protein Accession#	P62837
Gene Name	UBE2D2
Gene Alias	E2(17)KB2, PUBC1, UBC4, UBC4/5, UBCH5B
Gene Description	ubiquitin-conjugating enzyme E2D 2 (UBC4/5 homolog, yeast)
Omim ID	602962
Gene Ontology	Hyperlink
Gene Summary	<p>The modification of proteins with ubiquitin is an important cellular mechanism for targeting abnormal or short-lived proteins for degradation. Ubiquitination involves at least three classes of enzymes: ubiquitin-activating enzymes, or E1s, ubiquitin-conjugating enzymes, or E2s, and ubiquitin-protein ligases, or E3s. This gene encodes a member of the E2 ubiquitin-conjugating enzyme family. This enzyme functions in the ubiquitination of the tumor-suppressor protein p53, which is induced by an E3 ubiquitin-protein ligase. Two alternatively spliced transcript variants have been found for this gene and they encode distinct isoforms. [provided by RefSeq]</p>
Other Designations	ubiquitin carrier protein ubiquitin-conjugating enzyme E2 D2 ubiquitin-conjugating enzyme E2-17 kDa 2 ubiquitin-conjugating enzyme E2D 2 ubiquitin-conjugating enzyme E2D 2 (homologous to yeast UBC4/5)

Pathway

- [Ubiquitin mediated proteolysis](#)

Disease

- [Cardiovascular Diseases](#)
- [Chromosome Deletion](#)
- [Diabetes Mellitus](#)
- [Edema](#)
- [Myelodysplastic Syndromes](#)