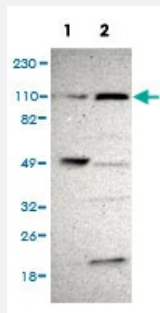


PAXBP1 polyclonal antibody

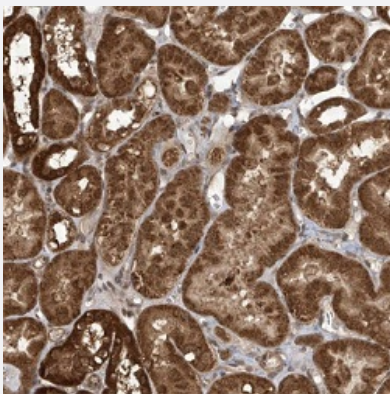
Catalog # PAB31017 Size 100 uL

Applications



Western Blot (Cell lysate)

Western Blot analysis of (1) Human RT-4 cell, (2) Human U-251MG sp cell.



Immunohistochemistry (Formalin/PFA-fixed paraffin-embedded sections)

Immunohistochemical staining (Formalin-fixed paraffin-embedded sections) of human kidney shows strong cytoplasmic positivity in tubular cells.

Specification

Product Description	Rabbit polyclonal antibody raised against partial recombinant human PAXBP1.
Immunogen	Recombinant protein corresponding to human PAXBP1.
Sequence	ALSSLNVL RPGEIPDAAFIHAARKKRQMARELGDFTPHDNEPGKGR LVREDENDASDDEDDDEKRRIVFSVKEKSQRQKIAEEIGIEGSDDDALVTGEQDEELSRWEQE QIRKGINIPQVQASQPAEVMNYYQNT
Host	Rabbit
Reactivity	Human

Form	Liquid
Purification	Affinity purification
Isotype	IgG
Recommend Usage	Immunohistochemistry (Formalin/PFA-fixed paraffin-embedded sections) (1:20-50) Western Blot (1:100-250) The optimal working dilution should be determined by the end user.
Storage Buffer	In PBS, pH 7.2 (40% glycerol, 0.02% sodium azide).
Storage Instruction	Store at 4°C. For long term storage store at -20°C. Aliquot to avoid repeated freezing and thawing.
Note	This product contains sodium azide: a POISONOUS AND HAZARDOUS SUBSTANCE which should be handled by trained staff only.

Applications

- Western Blot (Cell lysate)

Western Blot analysis of (1) Human RT-4 cell, (2) Human U-251MG sp cell.

- Immunohistochemistry (Formalin/PFA-fixed paraffin-embedded sections)

Immunohistochemical staining (Formalin-fixed paraffin-embedded sections) of human kidney shows strong cytoplasmic positivity in tubular cells.

Gene Info — C21orf66

Entrez GeneID	94104
Protein Accession#	Q9Y5B6
Gene Name	C21orf66
Gene Alias	BM-020, FLJ90561, GCFC, fSAP105
Gene Description	chromosome 21 open reading frame 66
Gene Ontology	Hyperlink
Gene Summary	This gene encodes a protein that may bind to GC-rich DNA sequences, which suggests its involvement in the regulation of transcription. Alternative splicing of this gene results in multiple transcript variants. [provided by RefSeq]
Other Designations	GC-rich sequence DNA-binding factor candidate functional spliceosome-associated protein 105

