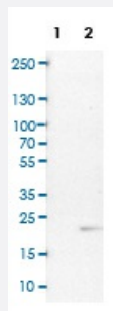


# ICT1 polyclonal antibody

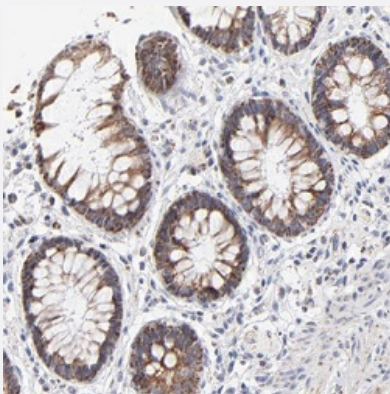
Catalog # PAB31011      Size 100 uL

## Applications



### Western Blot (Cell lysate)

Western Blot (Cell lysate) analysis of (1) NIH-3T3 cell lysate (Mouse embryonic fibroblast cells) and (2) NBT-II cell lysate (Rat Wistar bladder tumour cells).



### Immunohistochemistry (Formalin/PFA-fixed paraffin-embedded sections)

Immunohistochemical staining (Formalin-fixed paraffin-embedded sections) of human rectum shows strong cytoplasmic positivity in glandular cells.

## Specification

<b>Product Description</b>	Rabbit polyclonal antibody raised against partial recombinant human ICT1.
<b>Immunogen</b>	Recombinant protein corresponding to human ICT1.
<b>Sequence</b>	TEFKSIYSLDKLYPESQGSDTAWRVPNGAKQADSDIPLDRLTISYCRSSGPGGQNVNKNVNSKAEV RFHLATAEWIAEPVRQKIAITHKNKINRLGELILTSESSRYQFRNLADCLQKIRDMI
<b>Host</b>	Rabbit
<b>Reactivity</b>	Human, Rat

Form	Liquid
Purification	Affinity purification
Isotype	IgG
Recommend Usage	Immunohistochemistry (Formalin/PFA-fixed paraffin-embedded sections) (1:50-200) Western Blot (1:100-250) The optimal working dilution should be determined by the end user.
Storage Buffer	In PBS, pH 7.2 (40% glycerol, 0.02% sodium azide).
Storage Instruction	Store at 4°C. For long term storage store at -20°C. Aliquot to avoid repeated freezing and thawing.
Note	This product contains sodium azide: a POISONOUS AND HAZARDOUS SUBSTANCE which should be handled by trained staff only.

## Applications

- Western Blot (Cell lysate)

Western Blot (Cell lysate) analysis of (1) NIH-3T3 cell lysate (Mouse embryonic fibroblast cells) and (2) NBT-II cell lysate (Rat Wistar bladder tumour cells).

- Immunohistochemistry (Formalin/PFA-fixed paraffin-embedded sections)

Immunohistochemical staining (Formalin-fixed paraffin-embedded sections) of human rectum shows strong cytoplasmic positivity in glandular cells.

## Gene Info — ICT1

Entrez GeneID	<a href="#">3396</a>
Protein Accession#	<a href="#">Q14197</a>
Gene Name	ICT1
Gene Alias	DS-1
Gene Description	immature colon carcinoma transcript 1
Omim ID	<a href="#">603000</a>
Gene Ontology	<a href="#">Hyperlink</a>

**Gene Summary**

The adult colon epithelium contains 3 differentiated cell types that arise from a multipotent stem cell. Deviation from the normal maturation pathway by neoplastic transformation is thought to initiate in stem cells or their early descendants. One potential marker is ICT1 whose mRNA and protein were more highly expressed in undifferentiated than in differentiated cells. [provided by RefSeq]

**Other Designations**

-