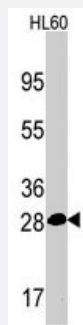


PSMA5 polyclonal antibody

Catalog # PAB3101

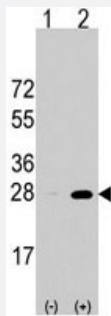
Size 400 uL

Applications



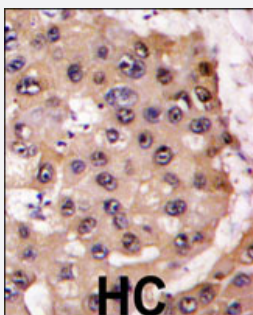
Western Blot (Cell lysate)

Western blot analysis of PSMA5 polyclonal antibody (Cat # PAB3101) in HL-60 cell line lysates (35 ug/lane). PSMA5 (arrow) was detected using the purified polyclonal antibody.



Western Blot (Transfected lysate)

Western blot analysis of PSMA5 (arrow) using rabbit PSMA5 polyclonal antibody (Cat # PAB3101). 293 cell lysates (2 ug/lane) either nontransfected (Lane 1) or transiently transfected with the PSMA5 gene (Lane 2) (Origene Technologies).



Immunohistochemistry (Formalin/PFA-fixed paraffin-embedded sections)

Formalin-fixed and paraffin-embedded human hepatocellular carcinoma reacted with PSMA5 polyclonal antibody (Cat # PAB3101), which was peroxidase-conjugated to the secondary antibody, followed by DAB staining. This data demonstrates the use of this antibody for immunohistochemistry; clinical relevance has not been evaluated.

Specification

Product Description

Rabbit polyclonal antibody raised against synthetic peptide of PSMA5.

Immunogen

A synthetic peptide (conjugated with KLH) corresponding to internal region of human PSMA5.

Host	Rabbit
Reactivity	Human
Form	Liquid
Purification	Protein A purification
Recommend Usage	Western Blot (1:1000) Immunohistochemistry (1:10-50) The optimal working dilution should be determined by the end user.
Storage Buffer	In PBS (0.09% sodium azide)
Storage Instruction	Store at 4°C. For long term storage store at -20°C. Aliquot to avoid repeated freezing and thawing.
Note	This product contains sodium azide: a POISONOUS AND HAZARDOUS SUBSTANCE which should be handled by trained staff only.

Applications

- Western Blot (Cell lysate)

Western blot analysis of PSMA5 polyclonal antibody (Cat # PAB3101) in HL-60 cell line lysates (35 ug/lane). PSMA5 (arrow) was detected using the purified polyclonal antibody.

- Western Blot (Transfected lysate)

Western blot analysis of PSMA5 (arrow) using rabbit PSMA5 polyclonal antibody (Cat # PAB3101). 293 cell lysates (2 ug/lane) either nontransfected (Lane 1) or transiently transfected with the PSMA5 gene (Lane 2) (Origene Technologies).

- Immunohistochemistry (Formalin/PFA-fixed paraffin-embedded sections)

Formalin-fixed and paraffin-embedded human hepatocellular carcinoma reacted with PSMA5 polyclonal antibody (Cat # PAB3101), which was peroxidase-conjugated to the secondary antibody, followed by DAB staining. This data demonstrates the use of this antibody for immunohistochemistry; clinical relevance has not been evaluated.

Gene Info — PSMA5

Entrez GeneID	5686
Protein Accession#	NP_002781;P28066
Gene Name	PSMA5
Gene Alias	MGC117302, MGC125802, MGC125803, MGC125804, PSC5, ZETA

Gene Description	proteasome (prosome, macropain) subunit, alpha type, 5
Omim ID	176844
Gene Ontology	Hyperlink
Gene Summary	<p>The proteasome is a multicatalytic proteinase complex with a highly ordered ring-shaped 20S core structure. The core structure is composed of 4 rings of 28 non-identical subunits; 2 rings are composed of 7 alpha subunits and 2 rings are composed of 7 beta subunits. Proteasomes are distributed throughout eukaryotic cells at a high concentration and cleave peptides in an ATP/ubiquitin-dependent process in a non-lysosomal pathway. An essential function of a modified proteasome, the immunoproteasome, is the processing of class I MHC peptides. This gene encodes a member of the peptidase T1A family, that is a 20S core alpha subunit. [provided by RefSeq]</p>
Other Designations	OTTHUMP00000013792 macropain subunit zeta macropain zeta chain multicatalytic endopeptidase complex zeta chain proteasome alpha 5 subunit proteasome component 5 proteasome subunit zeta proteasome zeta chain

Pathway

- [Proteasome](#)