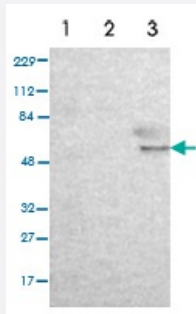


MTERFD3 polyclonal antibody

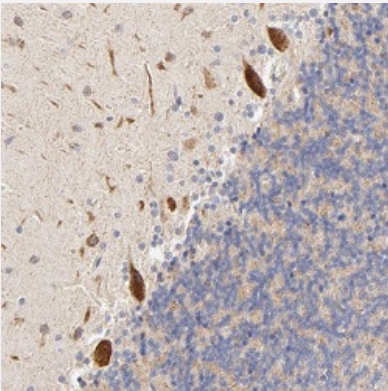
Catalog # PAB31008 Size 100 uL

Applications



Western Blot

Western Blot analysis of (1) Human RT-4 cell, (2) Human U-251MG sp cell, (3) Human plasma (IgG/HAS depleted).



Immunohistochemistry (Formalin/PFA-fixed paraffin-embedded sections)

Immunohistochemical staining (Formalin-fixed paraffin-embedded sections) of human cerebellum shows strong cytoplasmic positivity in Purkinje cells.

Specification

Product Description	Rabbit polyclonal antibody raised against partial recombinant human MTERFD3.
Immunogen	Recombinant protein corresponding to human MTERFD3.
Sequence	TRTVEKLYKCSVDIRKIRRLKGWVLEDETYVEEIANILQELGADETAVASILERCPEAMCSPTAVN TQRKLWQLVCKNEEELIKLIEQFPESFFTIKDQENQKLNQFFQELGLKNVISRLTAAPNVFHN PEKKNQKQMR
Host	Rabbit
Reactivity	Human

Form	Liquid
Purification	Affinity purification
Isotype	IgG
Recommend Usage	Immunohistochemistry (Formalin/PFA-fixed paraffin-embedded sections) (1:50-200) Western Blot (1:100-250) The optimal working dilution should be determined by the end user.
Storage Buffer	In PBS, pH 7.2 (40% glycerol, 0.02% sodium azide).
Storage Instruction	Store at 4°C. For long term storage store at -20°C. Aliquot to avoid repeated freezing and thawing.
Note	This product contains sodium azide: a POISONOUS AND HAZARDOUS SUBSTANCE which should be handled by trained staff only.

Applications

- Western Blot

Western Blot analysis of (1) Human RT-4 cell, (2) Human U-251MG sp cell, (3) Human plasma (IgG/HAS depleted).

- Immunohistochemistry (Formalin/PFA-fixed paraffin-embedded sections)

Immunohistochemical staining (Formalin-fixed paraffin-embedded sections) of human cerebellum shows strong cytoplasmic positivity in purkinje cells.

Gene Info — MTERFD3

Entrez GeneID	80298
Protein Accession#	Q49AM1
Gene Name	MTERFD3
Gene Alias	FLJ14062, mTERFL
Gene Description	MTERF domain containing 3
Gene Ontology	Hyperlink
Other Designations	mitochondrial transcription termination factor-like transcription termination factor-like protein