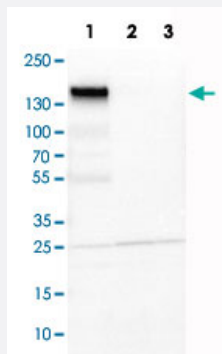


ITGA5 polyclonal antibody

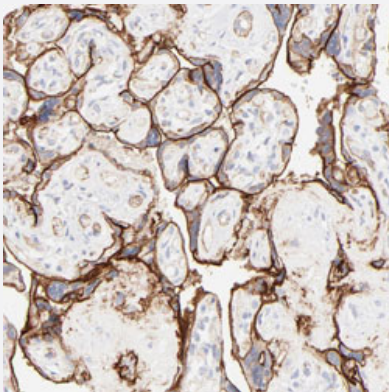
Catalog # PAB31001 Size 100 uL

Applications



Western Blot (Cell lysate)

Western Blot analysis of Lane 1: mouse NIH-3T3, Lane 2: rat NBT-II and Lane 3: rat PC12 cell lysates with ITGA5 polyclonal antibody (Cat # PAB31001).



Immunohistochemistry (Formalin/PFA-fixed paraffin-embedded sections)

Immunohistochemical staining (Formalin-fixed paraffin-embedded sections) of human placenta with ITGA5 polyclonal antibody (Cat # PAB31001) shows strong membranous positivity in trophoblastic cells.

Specification

Product Description	Rabbit polyclonal antibody raised against partial recombinant human ITGA5.
Immunogen	Recombinant protein corresponding to human ITGA5.
Sequence	DQPQKEEDLGPAVHHVYELINQGPSSISQGVLELSCPQALEGQQLLYVTRVTGLNCTTNHPINPKG LELDPEGSLHHQKREAPSRSSASSGPQILKCPEAECFRLRCELGPLHQQESQSLQLHFRVWA
Host	Rabbit
Reactivity	Human, Mouse

Form	Liquid
Purification	Antigen affinity purification
Isotype	IgG
Recommend Usage	Immunohistochemistry (Formalin/PFA-fixed paraffin-embedded sections) (1:1000-1:2500) Western Blot (1:500-1:1000) The optimal working dilution should be determined by the end user.
Storage Buffer	In PBS, pH 7.2 (40% glycerol, 0.02% sodium azide).
Storage Instruction	Store at 4°C. For long term storage store at -20°C. Aliquot to avoid repeated freezing and thawing.
Note	This product contains sodium azide: a POISONOUS AND HAZARDOUS SUBSTANCE which should be handled by trained staff only.

Applications

- Western Blot (Cell lysate)

Western Blot analysis of Lane 1: mouse NIH-3T3, Lane 2: rat NBT-II and Lane 3: rat PC12 cell lysates with ITGA5 polyclonal antibody (Cat # PAB31001).

- Immunohistochemistry (Formalin/PFA-fixed paraffin-embedded sections)

Immunohistochemical staining (Formalin-fixed paraffin-embedded sections) of human placenta with ITGA5 polyclonal antibody (Cat # PAB31001) shows strong membranous positivity in trophoblastic cells.

Gene Info — ITGA5

Entrez GeneID	3678
Protein Accession#	P08648
Gene Name	ITGA5
Gene Alias	CD49e, FNRA, VLA5A
Gene Description	integrin, alpha 5 (fibronectin receptor, alpha polypeptide)
Omim ID	135620
Gene Ontology	Hyperlink

Gene Summary

The product of this gene belongs to the integrin alpha chain family. Integrins are heterodimeric integral membrane proteins composed of an alpha chain and a beta chain. This gene encodes the integrin alpha 5 chain. Alpha chain 5 undergoes post-translational cleavage in the extracellular domain to yield disulfide-linked light and heavy chains that join with beta 1 to form a fibronectin receptor. In addition to adhesion, integrins are known to participate in cell-surface mediated signalling. [provided by RefSeq]

Other Designations

fibronectin receptor, alpha subunit|integrin alpha 5|very late activation protein 5, alpha subunit

Publication Reference

- [Survivin promotion of melanoma metastasis requires upregulation of \$\alpha 5\$ integrin.](#)

McKenzie JA, Liu T, Jung JY, Jones BB, Ekiz HA, Welm AL, Grossman D.

Carcinogenesis 2013 Sep; 34(9):2137.

Application: IHC-P, WB-Tr, Human, YUSAC2 cells

Pathway

- [Arrhythmogenic right ventricular cardiomyopathy \(ARVC\)](#)
- [ECM-receptor interaction](#)
- [Focal adhesion](#)
- [Hematopoietic cell lineage](#)
- [Hypertrophic cardiomyopathy \(HCM\)](#)
- [Regulation of actin cytoskeleton](#)

Disease

- [Tobacco Use Disorder](#)