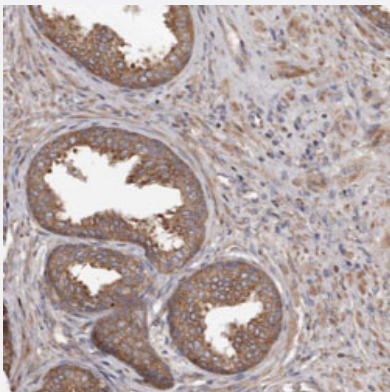


# STEAP2 polyclonal antibody

Catalog # PAB30999

Size 100 uL

## Applications



### Immunohistochemistry (Formalin/PFA-fixed paraffin-embedded sections)

Immunohistochemical staining (Formalin-fixed paraffin-embedded sections) of human prostate with STEAP2 polyclonal antibody (Cat # PAB30999) shows moderate cytoplasmic positivity in glandular cells.

## Specification

Product Description	Rabbit polyclonal antibody raised against partial recombinant human STEAP2.
Immunogen	Recombinant protein corresponding to human STEAP2.
Sequence	EYLASLFPDSLIVKGFNVVSAWALQLGPKDASRQVYICSNNIQARQQVIELARQLNFIPIIDLGLSSAREIE
Host	Rabbit
Reactivity	Human
Form	Liquid
Purification	Antigen affinity purification
Isotype	IgG
Recommend Usage	Immunohistochemistry (Formalin/PFA-fixed paraffin-embedded sections) (1:50-1:200) The optimal working dilution should be determined by the end user.
Storage Buffer	In PBS, pH 7.2 (40% glycerol, 0.02% sodium azide).

**Storage Instruction**

Store at 4°C. For long term storage store at -20°C.  
Aliquot to avoid repeated freezing and thawing.

**Note**

This product contains sodium azide: a POISONOUS AND HAZARDOUS SUBSTANCE which should be handled by trained staff only.

## Applications

- Immunohistochemistry (Formalin/PFA-fixed paraffin-embedded sections)

Immunohistochemical staining (Formalin-fixed paraffin-embedded sections) of human prostate with STEAP2 polyclonal antibody (Cat # PAB30999) shows moderate cytoplasmic positivity in glandular cells.

## Gene Info — STEAP2

**Entrez GeneID**[261729](#)**Protein Accession#**[Q8NFT2](#)**Gene Name**

STEAP2

**Gene Alias**

IPCA1, PCANAP1, PUMPCn, STAMP1, STMP

**Gene Description**

six transmembrane epithelial antigen of the prostate 2

**Omim ID**[605094](#)**Gene Ontology**[Hyperlink](#)**Gene Summary**

This gene is a member of the STEAP family and encodes a multi-pass membrane protein that localizes to the Golgi complex, the plasma membrane, and the vesicular tubular structures in the cytosol. A highly similar protein in mouse has both ferrireductase and cupric reductase activity, and stimulates the cellular uptake of both iron and copper in vitro. Increased transcriptional expression of the human gene is associated with prostate cancer progression. Alternate transcriptional splice variants, encoding different isoforms, have been characterized. [provided by RefSeq]

**Other Designations**

OTTHUMP00000067572|OTTHUMP00000067575|SixTransMembrane Protein of Prostate 1|prostate cancer associated protein 1|protein upregulated in metastatic prostate cancer|six transmembrane epithelial antigen of prostate 2

## Disease

- [Tobacco Use Disorder](#)