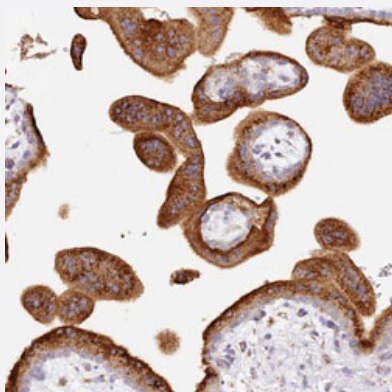


# LAMP2 polyclonal antibody

Catalog # PAB30998      Size 100 uL

## Applications



### Immunohistochemistry (Formalin/PFA-fixed paraffin-embedded sections)

Immunohistochemical staining (Formalin-fixed paraffin-embedded sections) of human placenta with LAMP2 polyclonal antibody (Cat # PAB30998) shows strong cytoplasmic positivity in trophoblastic cells.

## Specification

Product Description	Rabbit polyclonal antibody raised against partial recombinant human LAMP2.
Immunogen	Recombinant protein corresponding to human LAMP2.
Sequence	ASTYSIDSVSFSYNTGDNTTFPDAEDKGILTVDELLAIRIPLNDLFRCNSLSTLEKNDVVQHYWDVLV
Host	Rabbit
Reactivity	Human
Form	Liquid
Purification	Antigen affinity purification
Isotype	IgG
Recommend Usage	Immunohistochemistry (Formalin/PFA-fixed paraffin-embedded sections) (1:1000-1:2500) The optimal working dilution should be determined by the end user.
Storage Buffer	In PBS, pH 7.2 (40% glycerol, 0.02% sodium azide).

**Storage Instruction**

Store at 4°C. For long term storage store at -20°C.  
Aliquot to avoid repeated freezing and thawing.

**Note**

This product contains sodium azide: a POISONOUS AND HAZARDOUS SUBSTANCE which should be handled by trained staff only.

## Applications

- Immunohistochemistry (Formalin/PFA-fixed paraffin-embedded sections)

Immunohistochemical staining (Formalin-fixed paraffin-embedded sections) of human placenta with LAMP2 polyclonal antibody (Cat # PAB30998) shows strong cytoplasmic positivity in trophoblastic cells.

## Gene Info — LAMP2

**Entrez GeneID**[3920](#)**Protein Accession#**[P13473](#)**Gene Name**

LAMP2

**Gene Alias**

CD107b, LAMPB, LGP110

**Gene Description**

lysosomal-associated membrane protein 2

**Omim ID**[300257 309060](#)**Gene Ontology**[Hyperlink](#)**Gene Summary**

The protein encoded by this gene is a member of a family of membrane glycoproteins. This glyco protein provides selectins with carbohydrate ligands. It may play a role in tumor cell metastasis. It may also function in the protection, maintenance, and adhesion of the lysosome. Alternative splicing of this gene results in multiple transcript variants encoding distinct proteins. [provided by RefSeq]

**Other Designations**

OTTHUMP00000023943|OTTHUMP00000023944|lysosome-associated membrane protein 2

## Pathway

- [Lysosome](#)

## Disease

- [Cardiomegaly](#)
- [Cardiomyopathy](#)
- [Cardiovascular Diseases](#)
- [Diabetes Mellitus](#)
- [Edema](#)
- [Genetic Predisposition to Disease](#)