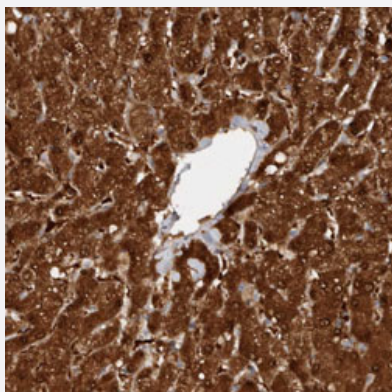


RBKS polyclonal antibody

Catalog # PAB30988 Size 100 uL

Applications



Immunohistochemistry (Formalin/PFA-fixed paraffin-embedded sections)

Immunohistochemical staining (Formalin-fixed paraffin-embedded sections) of human liver with RBKS polyclonal antibody (Cat # PAB30988) shows strong cytoplasmic and nuclear positivity in hepatocytes.

Specification

Product Description	Rabbit polyclonal antibody raised against partial recombinant human RBKS.
Immunogen	Recombinant protein corresponding to human RBKS.
Sequence	LNTEDLRAAANVISRAKVMVCQLEITPATSLEALTMARRSGVKTLFNPAPAIADLDPQFYTLSDVF CCNESEAEILTGLTVGSAADAGEAALVLLK
Host	Rabbit
Reactivity	Human
Form	Liquid
Purification	Antigen affinity purification
Isotype	IgG
Recommend Usage	Immunohistochemistry (Formalin/PFA-fixed paraffin-embedded sections) (1:50-1:200) The optimal working dilution should be determined by the end user.
Storage Buffer	In PBS, pH 7.2 (40% glycerol, 0.02% sodium azide).

Storage Instruction

Store at 4°C. For long term storage store at -20°C.
Aliquot to avoid repeated freezing and thawing.

Note

This product contains sodium azide: a POISONOUS AND HAZARDOUS SUBSTANCE which should be handled by trained staff only.

Applications

- Immunohistochemistry (Formalin/PFA-fixed paraffin-embedded sections)

Immunohistochemical staining (Formalin-fixed paraffin-embedded sections) of human liver with RBKS polyclonal antibody (Cat # PAB30988) shows strong cytoplasmic and nuclear positivity in hepatocytes.

Gene Info — RBKS

Entrez GeneID [64080](#)

Protein Accession# [Q9H477](#)

Gene Name RBKS

Gene Alias DKFZp686G13268, RBSK

Gene Description ribokinase

Omim ID [611132](#)

Gene Ontology [Hyperlink](#)

Gene Summary The ribokinase encoded by this gene belongs to the pfkB family of carbohydrate kinases. It phosphorylates ribose to form ribose-5-phosphate in the presence of ATP and magnesium as a first step in ribose metabolism. [provided by RefSeq]

Other Designations 5230400M11Rik

Pathway

- [Pentose phosphate pathway](#)

Disease

- [Tobacco Use Disorder](#)