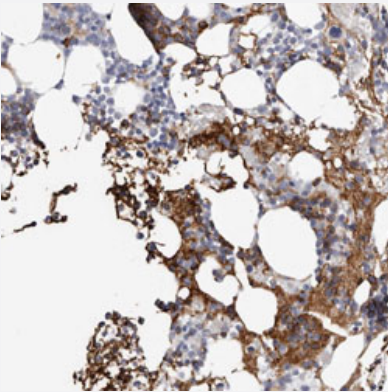


# SPTA1 polyclonal antibody

Catalog # PAB30985      Size 100 uL

## Applications



### Immunohistochemistry (Formalin/PFA-fixed paraffin-embedded sections)

Immunohistochemical staining (Formalin-fixed paraffin-embedded sections) of human bone marrow with SPTA1 polyclonal antibody (Cat # PAB30985) shows strong cytoplasmic positivity in subsets of bone marrow poietic cells.

## Specification

Product Description	Rabbit polyclonal antibody raised against partial recombinant human SPTA1.
Immunogen	Recombinant protein corresponding to human SPTA1.
Sequence	HQGMPAVYVRRLAHDEFMPLPQRRREEPGNITQRQEIQENQYRSLLDRAEERRRLLQRYNEFL AYEAGDMLEWQEKKAENTGVEL
Host	Rabbit
Reactivity	Human
Form	Liquid
Purification	Antigen affinity purification
Isotype	IgG
Recommend Usage	Immunohistochemistry (Formalin/PFA-fixed paraffin-embedded sections) (1:20-1:50) The optimal working dilution should be determined by the end user.
Storage Buffer	In PBS, pH 7.2 (40% glycerol, 0.02% sodium azide).

## Storage Instruction

Store at 4°C. For long term storage store at -20°C.  
Aliquot to avoid repeated freezing and thawing.

## Note

This product contains sodium azide: a POISONOUS AND HAZARDOUS SUBSTANCE which should be handled by trained staff only.

## Applications

- Immunohistochemistry (Formalin/PFA-fixed paraffin-embedded sections)

Immunohistochemical staining (Formalin-fixed paraffin-embedded sections) of human bone marrow with SPTA1 polyclonal antibody (Cat # PAB30985) shows strong cytoplasmic positivity in subsets of bone marrow poietic cells.

## Gene Info — SPTA1

### Entrez GeneID

[6708](#)

### Protein Accession#

[P02549](#)

### Gene Name

SPTA1

### Gene Alias

EL2, SPTA

### Gene Description

spectrin, alpha, erythrocytic 1 (elliptocytosis 2)

### Omim ID

[130600](#) [182860](#) [266140](#) [270970](#)

### Gene Ontology

[Hyperlink](#)

### Gene Summary

Spectrin is an actin crosslinking and molecular scaffold protein that links the plasma membrane to the actin cytoskeleton, and functions in the determination of cell shape, arrangement of transmembrane proteins, and organization of organelles. It is a tetramer made up of alpha-beta dimers linked in a head-to-head arrangement. This gene is one member of a family of alpha-spectrin genes. The encoded protein is primarily composed of 22 spectrin repeats which are involved in dimer formation. It forms weaker tetramer interactions than non-erythrocytic alpha spectrin, which may increase the plasma membrane elasticity and deformability of red blood cells. Mutations in this gene result in a variety of hereditary red blood cell disorders, including elliptocytosis type 2, pyropoikilocytosis, and spherocytic hemolytic anemia. [provided by RefSeq]

### Other Designations

OTTHUMP00000021115|alpha-I spectrin|erythrocyte alpha-spectrin|erythroid alpha-spectrin|spectrin alpha chain, erythrocyte|spectrin, alpha, erythrocytic 1

## Disease

- [Hypertension](#)

- [Tobacco Use Disorder](#)