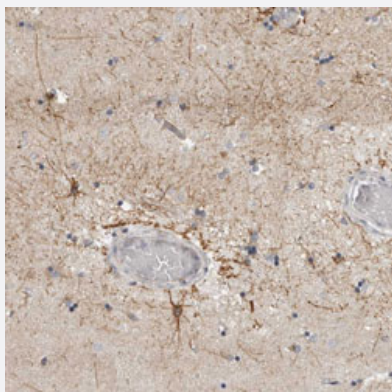


RXFP3 polyclonal antibody

Catalog # PAB30983 Size 100 uL

Applications



Immunohistochemistry (Formalin/PFA-fixed paraffin-embedded sections)

Immunohistochemical staining (Formalin-fixed paraffin-embedded sections) of human lateral ventricle with RXFP3 polyclonal antibody (Cat # PAB30983) shows distinct cytoplasmic positivity in astrocytes.

Specification

Product Description	Rabbit polyclonal antibody raised against partial recombinant human RXFP3.
Immunogen	Recombinant protein corresponding to human RXFP3.
Sequence	MQMADAATATMNKAAGGDKLAELFSLVPDLLEAANTSGNASLQLPDLWWELGLELPDG
Host	Rabbit
Reactivity	Human
Form	Liquid
Purification	Antigen affinity purification
Isotype	IgG
Recommend Usage	Immunohistochemistry (Formalin/PFA-fixed paraffin-embedded sections) (1:200-1:500) The optimal working dilution should be determined by the end user.
Storage Buffer	In PBS, pH 7.2 (40% glycerol, 0.02% sodium azide).

Storage Instruction

Store at 4°C. For long term storage store at -20°C.
Aliquot to avoid repeated freezing and thawing.

Note

This product contains sodium azide: a POISONOUS AND HAZARDOUS SUBSTANCE which should be handled by trained staff only.

Applications

- Immunohistochemistry (Formalin/PFA-fixed paraffin-embedded sections)

Immunohistochemical staining (Formalin-fixed paraffin-embedded sections) of human lateral ventricle with RXFP3 polyclonal antibody (Cat # PAB30983) shows distinct cytoplasmic positivity in astrocytes.

Gene Info — RXFP3

Entrez GeneID[51289](#)**Protein Accession#**[Q9NSD7](#)**Gene Name**

RXFP3

Gene Alias

GPCR135, MGC141998, MGC142000, RLN3R1, RXFPR3, SALPR

Gene Description

relaxin/insulin-like family peptide receptor 3

Omim ID[609445](#)**Gene Ontology**[Hyperlink](#)**Other Designations**

G-protein coupled receptor SALPR|relaxin 3 receptor 1|relaxin family peptide receptor 3|somatostatin and angiotensin-like peptide receptor