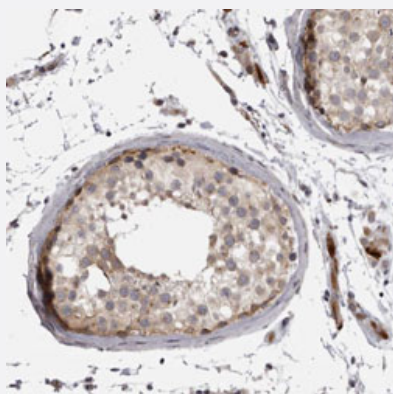


EPHA10 polyclonal antibody

Catalog # PAB30978

Size 100 uL

Applications



Immunohistochemistry (Formalin/PFA-fixed paraffin-embedded sections)

Immunohistochemical staining (Formalin-fixed paraffin-embedded sections) of human testis with EPHA10 polyclonal antibody (Cat # PAB30978) shows strong cytoplasmic positivity in Leydig cells.

Specification

Product Description	Rabbit polyclonal antibody raised against partial recombinant human EPHA10.
Immunogen	Recombinant protein corresponding to human EPHA10.
Sequence	TTYAQVTVSTGPGAPWEEDEIRRDVEPQSVLSWREIPAGAPGANDTEYEIRYYEKGQSEQTY SMVKTGAPTVTVTNLKPATRYVFQIRAAS
Host	Rabbit
Reactivity	Human
Form	Liquid
Purification	Antigen affinity purification
Isotype	IgG
Recommend Usage	Immunohistochemistry (Formalin/PFA-fixed paraffin-embedded sections) (1:50-1:200) The optimal working dilution should be determined by the end user.
Storage Buffer	In PBS, pH 7.2 (40% glycerol, 0.02% sodium azide).

Storage Instruction

Store at 4°C. For long term storage store at -20°C.
Aliquot to avoid repeated freezing and thawing.

Note

This product contains sodium azide: a POISONOUS AND HAZARDOUS SUBSTANCE which should be handled by trained staff only.

Applications

- Immunohistochemistry (Formalin/PFA-fixed paraffin-embedded sections)

Immunohistochemical staining (Formalin-fixed paraffin-embedded sections) of human testis with EPHA10 polyclonal antibody (Cat # PAB30978) shows strong cytoplasmic positivity in Leydig cells.

Gene Info — EPHA10

Entrez GeneID[284656](#)**Protein Accession#**[Q5JZY3](#)**Gene Name**

EPHA10

Gene Alias

FLJ16103, FLJ33655, MGC43817

Gene Description

EPH receptor A10

Omim ID[611123](#)**Gene Ontology**[Hyperlink](#)**Gene Summary**

Ephrin receptors, the largest subfamily of receptor tyrosine kinases (RTKs), and their ephrin ligands are important mediators of cell-cell communication regulating cell attachment, shape, and mobility in neuronal and epithelial cells (Aasheim et al., 2005 [PubMed 15777695]). See MIM 179610 for additional background on Eph receptors and ephrins.[supplied by OMIM]

Other Designations

EphA10s protein|Ephrin type-A receptor 10|OTTHUMP00000004519